

How to use Wi-Fi 6 Router as Wi-Fi 6 EasyMesh

Whole Home Wi-Fi Coverage with mesh Wi-Fi

Get stronger, faster Wi-Fi connection in every room by pairing 2 or more Maxis Fibre.

Step 1

Connect the Power Cord

Connect the power cord to the Maxis Wi-Fi 6 Router and wall socket. Do the same for the Maxis Wi-Fi 6 EasyMesh.

Turn on the power at the wall and on the Maxis Wi-Fi 6 Router and Maxis Wi-Fi 6 EasyMesh.

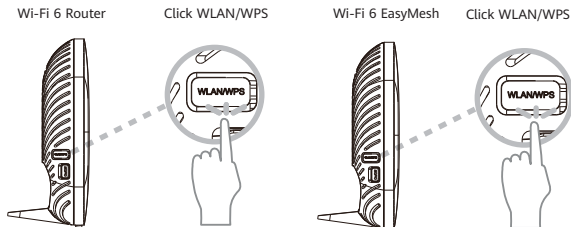
Take a break for a minute and wait for the indicators to come on.

Note: Do not access the web page of the Maxis Wi-Fi 6 EasyMesh after it is powered on; otherwise, Maxis Wi-Fi 6 EasyMesh will fail to switch to the bridge mode.



Step 2

Connect Maxis Wi-Fi 6 EasyMesh to Maxis Wi-Fi 6 Router



1. Make sure the Maxis Wi-Fi 6 Router and Maxis Wi-Fi 6 EasyMesh are powered on and wait for them to start.
2. Keep a distance 1-2 meters between Wi-Fi 6 Router and Wi-Fi 6 EasyMesh to avoid interference when pairing.
3. Press the **WLAN/WPS** button on the Maxis Wi-Fi 6 EasyMesh for more than 10 seconds, and then release the button.
4. Press the **WLAN/WPS** button on Wi-Fi 6 Router for 1-2 seconds. The WLAN indicator blinks.
5. Wait for several seconds, Wi-Fi 6 EasyMesh restarts automatically, and all indicators will turn off.
6. After Wi-Fi 6 EasyMesh restarts, Wi-Fi 6 EasyMesh successfully switches to the bridge mode and connects to Wi-Fi 6 Router automatically. The Internet indicator of Wi-Fi 6 EasyMesh will be steady on.
7. Place Wi-Fi 6 EasyMesh in proper position. For details, see Step 3.

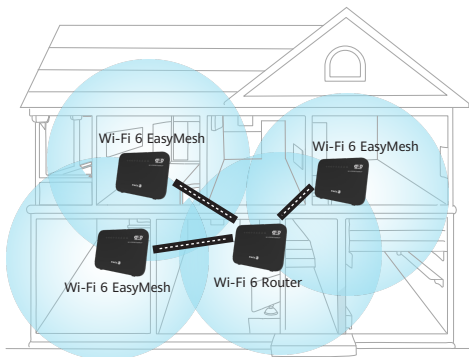
Step 3

Select the best location for your Maxis Wi-Fi 6 EasyMesh

We recommend selecting locations:

- 1-2 rooms away from your Maxis Wi-Fi 6 EasyMesh.
- That avoid corners, electronics and metal objects. (like microwaves, fridges)
- That are about halfway between a Wi-Fi deadspot and your Maxis Wi-Fi 6 EasyMesh.

Since every home is different, we recommend you to try a couple of spots for your Maxis Wi-Fi 6 EasyMesh to get the best coverage. Hope the diagrams below helps with positioning.



Step 4

Connect to the Wi-Fi Network

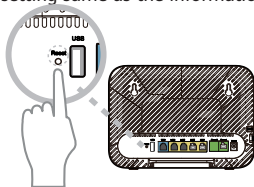
Connect your mobile phone, pad, or PC to the default Wi-Fi SSID name of Maxis Wi-Fi 6 Router. To obtain the default SSID and key, check the nameplate at the bottom of Maxis Wi-Fi 6 Router.

To better secure your WLAN, promptly change the SSID and key.

Notes : Returning to factory setting

To restore the device to factory setting, press the reset button in the back of Wi-Fi 6 Router or Wi-Fi 6 EasyMesh for over 6 seconds. (using a needle for easier pressing) The indicators in the front will be blinking temporarily and the device will reboot to factory settings.

- The previous Wi-Fi settings will be reset to factory setting same as the information of the label at the bottom of device after pressing the reset button.
 - Wi-Fi : SSID, Password
 - Web UI : Username, Password
- If you want to keep your previous settings, please write them here and set them again after completing factory reset.



- Wi-Fi Network
SSID :
Password :
- WebUI
Username :
Password :

* You can use factory reset if you want to remove the mesh pairing/setting.

Tips for your experience

Finding the right spot for your Maxis Wi-Fi 6 EasyMesh can take a couple of tries. Give these tips a go if you're having trouble extending Wi-Fi coverage throughout your home.

- Once your Maxis Wi-Fi 6 Router and Maxis Wi-Fi 6 EasyMesh are connected for the first time, you can safely power the Wi-Fi 6 EasyMesh off and move it to another location in your home.
They will automatically reconnect when both are switched on, if they are in range.
- If the WLAN/WPS indicator on the Wi-Fi 6 EasyMesh does not turn on, it may be too far away from the Router. Bring the Wi-Fi 6 EasyMesh closer to the Router and try again.
- Try to put your Wi-Fi 6 EasyMesh away from the ground. (on a shelf or desk if possible)
- Try to limit the number of walls or obstructions between the Wi-Fi 6 EasyMesh and the Router. Nearby electronics can interfere with Wi-Fi as much as solid walls.

Looking for more?

Download the Maxis app to manage, optimize and troubleshoot your home Wi-Fi.



Copyright © Huawei Technologies Co., Ltd. 2022. All rights reserved.

No part of this document may be reproduced or transmitted in any form or by any means without prior written consent of Huawei Technologies Co., Ltd.