



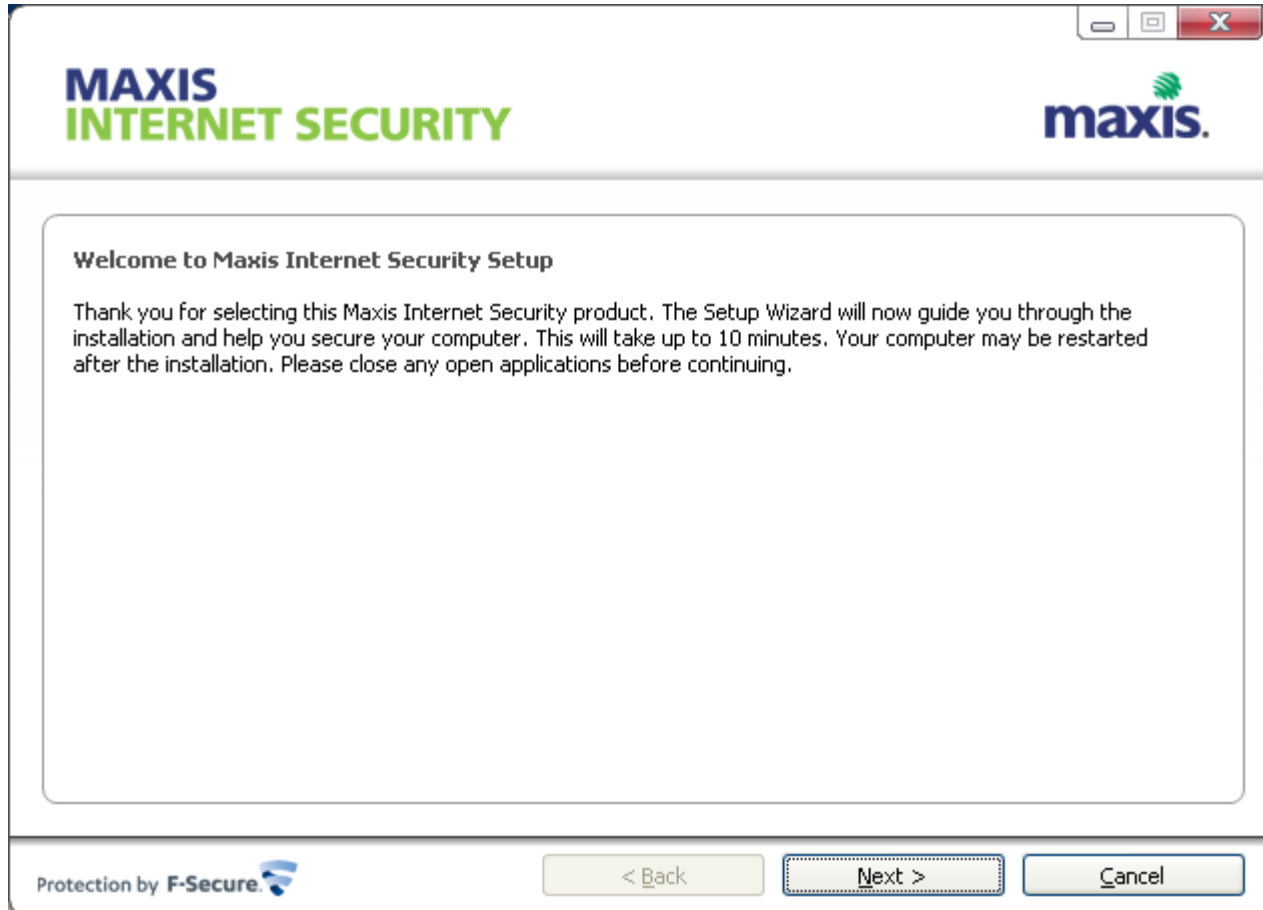
Installation Guide for Maxis Internet Security



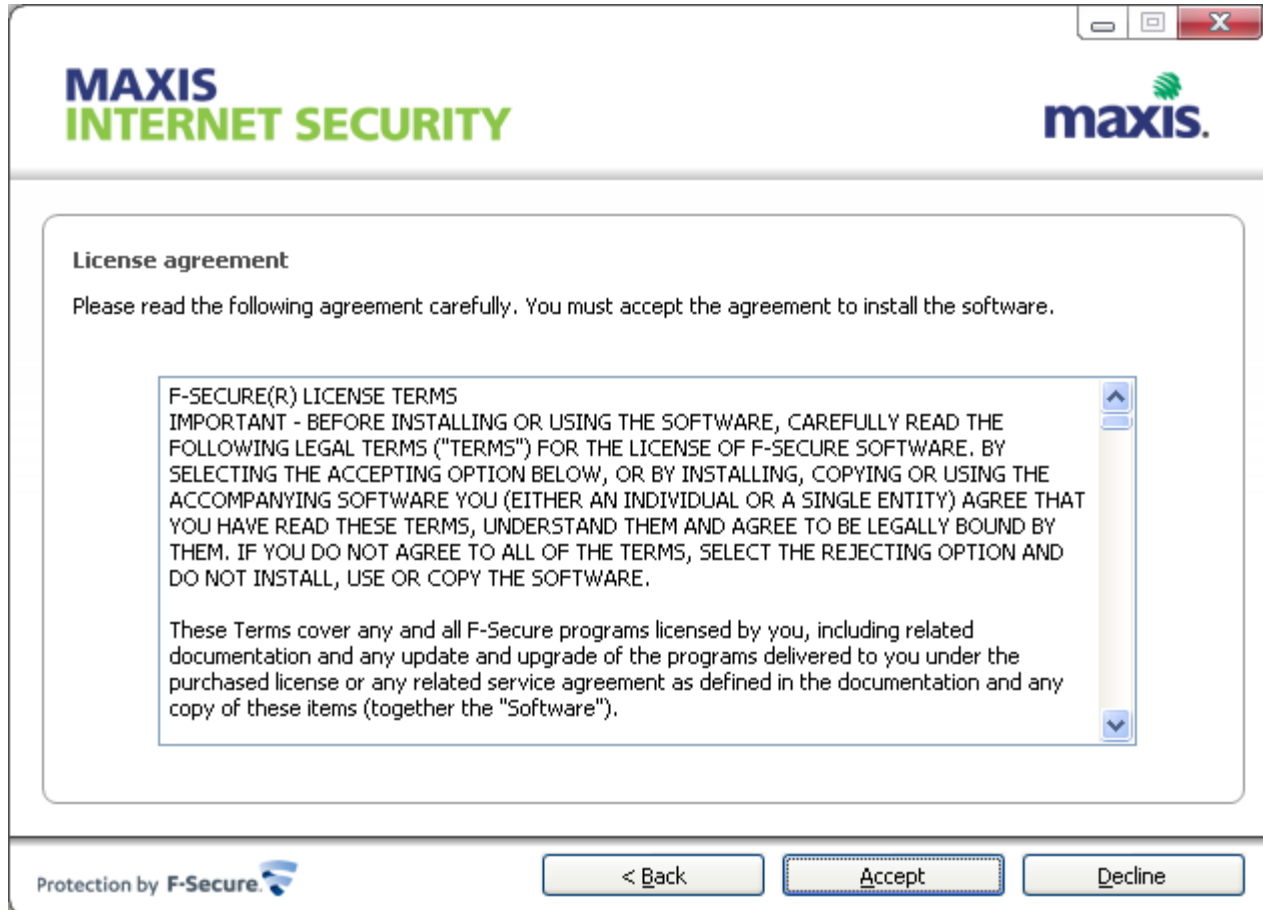
MAXIS
INTERNET SECURITY

INSTALLATION GUIDE FOR MAXIS INTERNET SECURITY

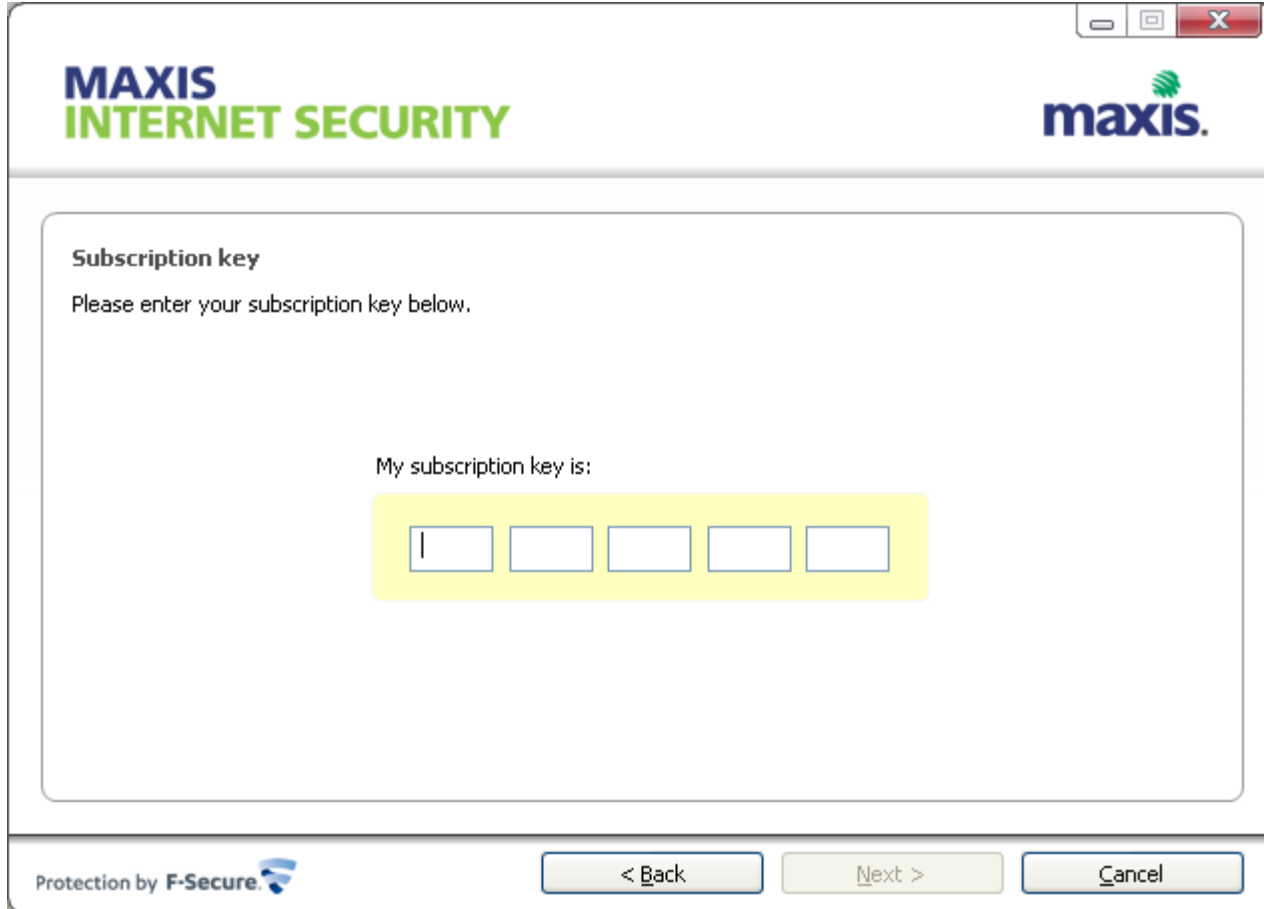
Installation Guide for Maxis Internet Security



Installation Guide for Maxis Internet Security



Installation Guide for Maxis Internet Security



MAXIS
INTERNET SECURITY

maxis.

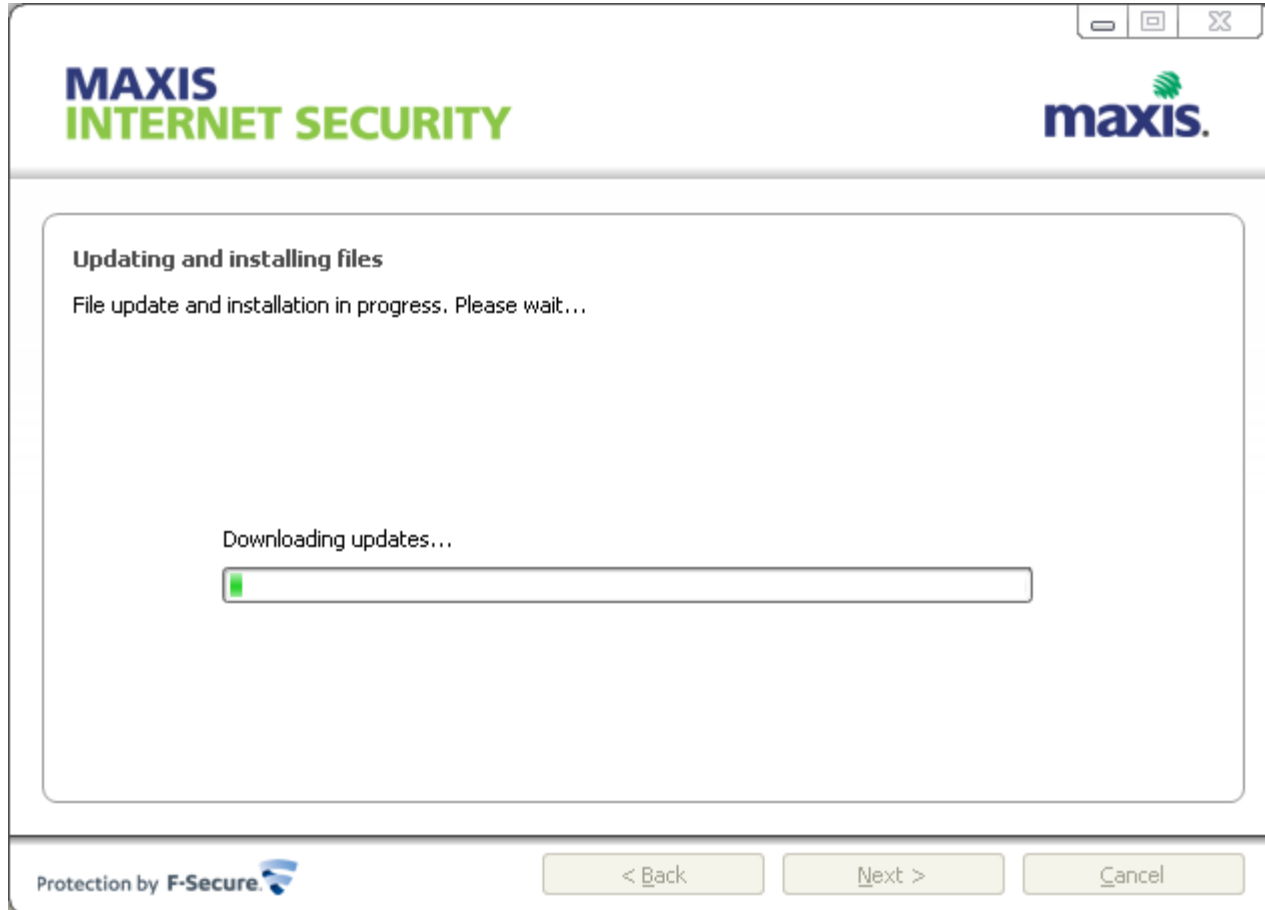
Subscription key
Please enter your subscription key below.

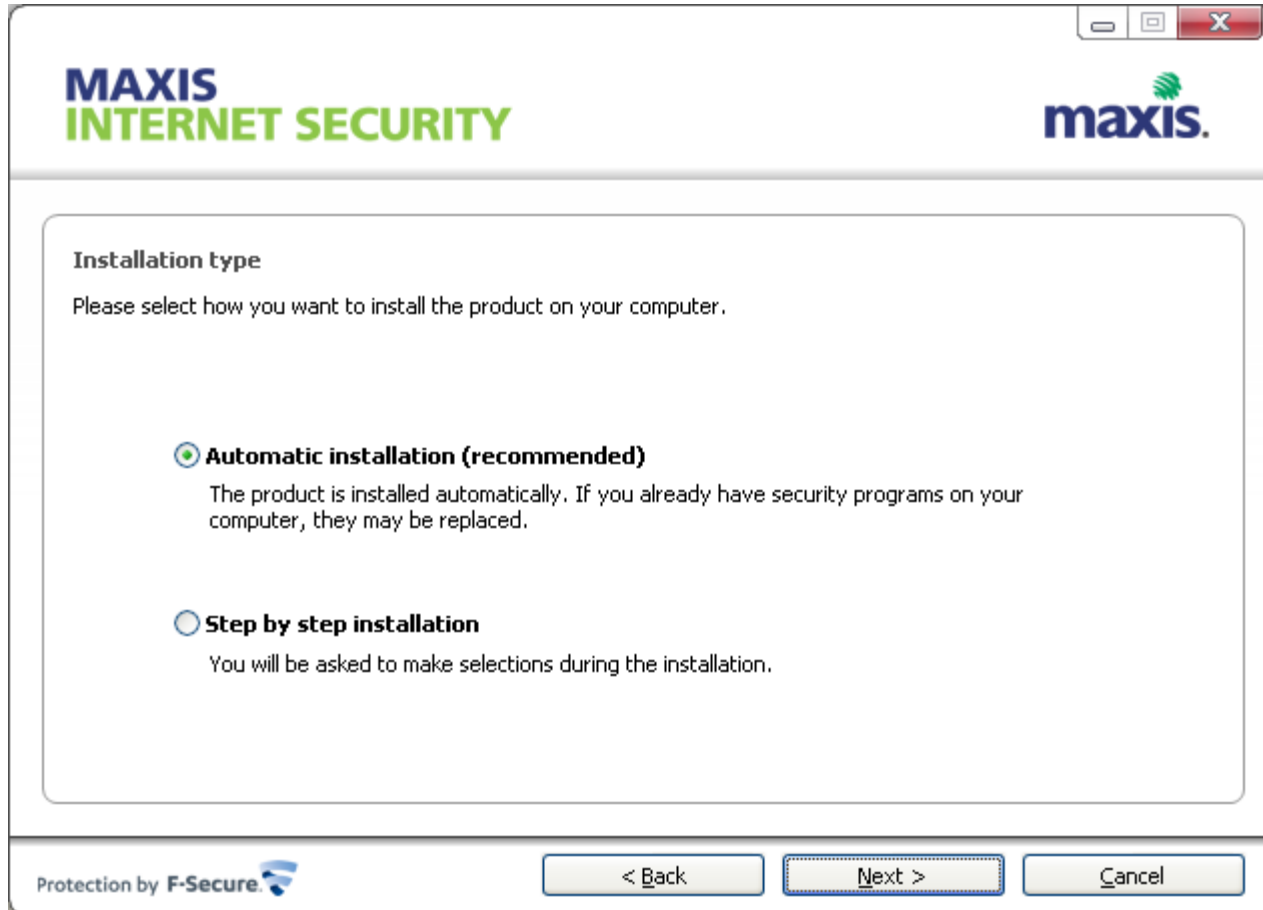
My subscription key is:

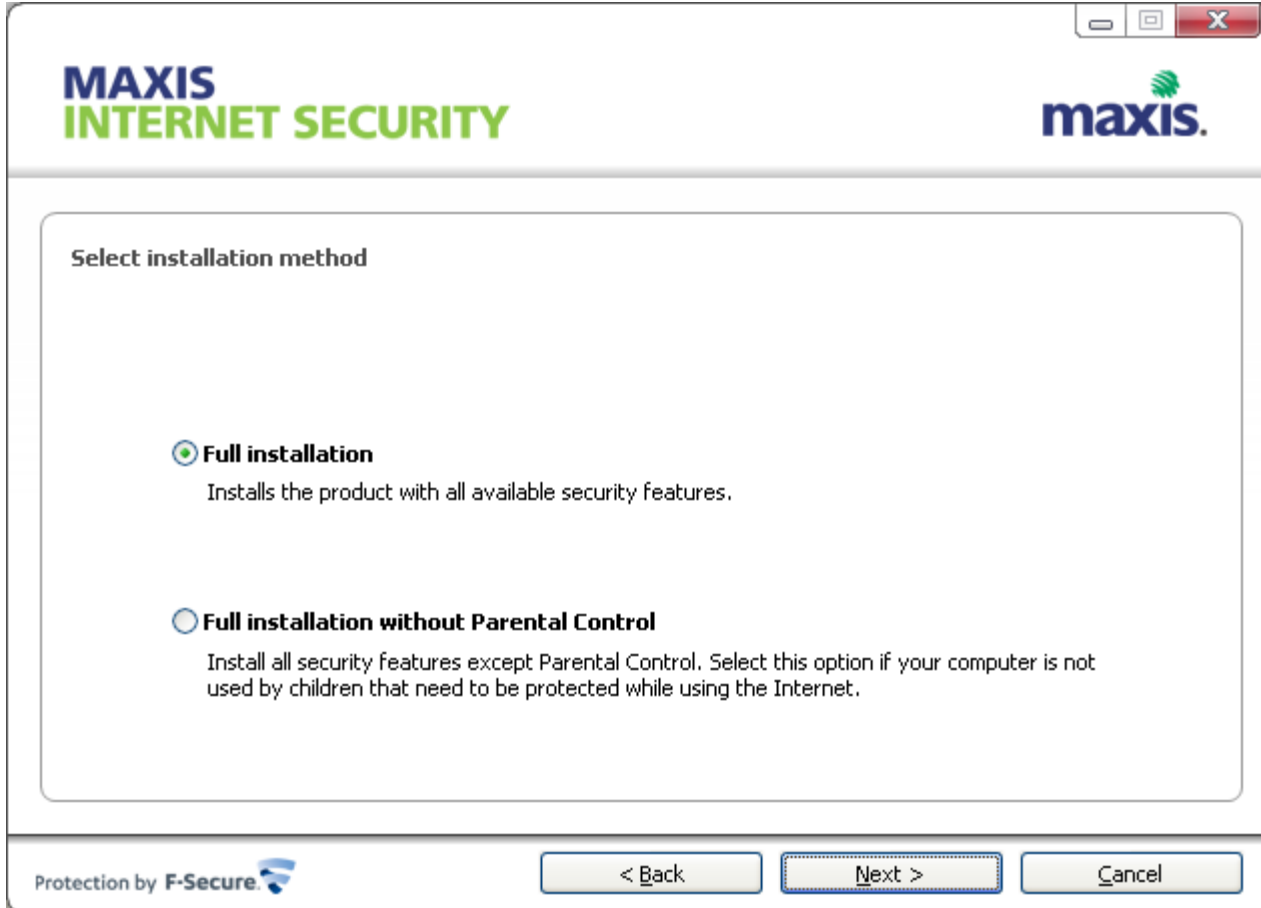
Protection by **F-Secure**

< Back Next > Cancel

Installation Guide for Maxis Internet Security







MAXIS
INTERNET SECURITY

maxis.

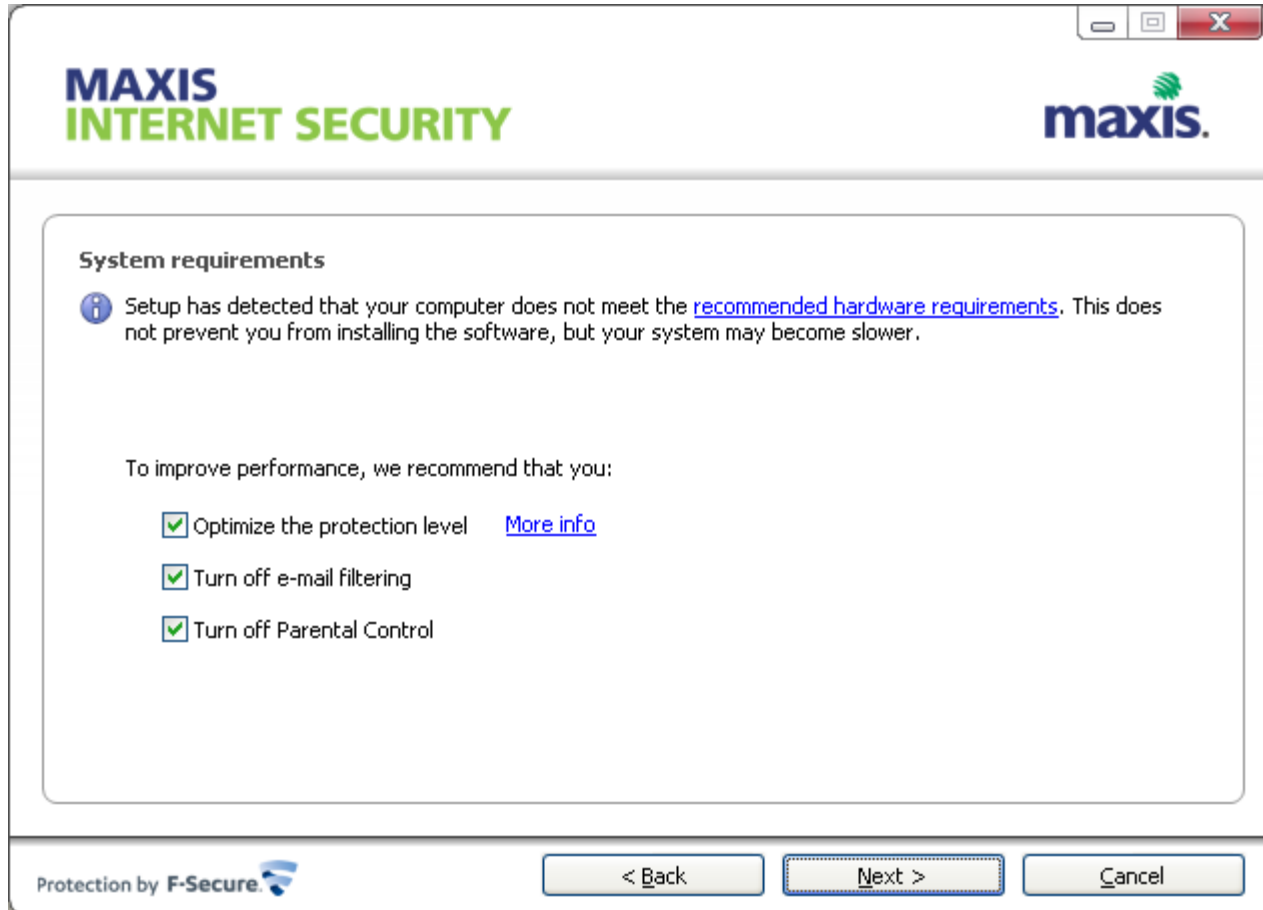
Select installation method

Full installation
Installs the product with all available security features.

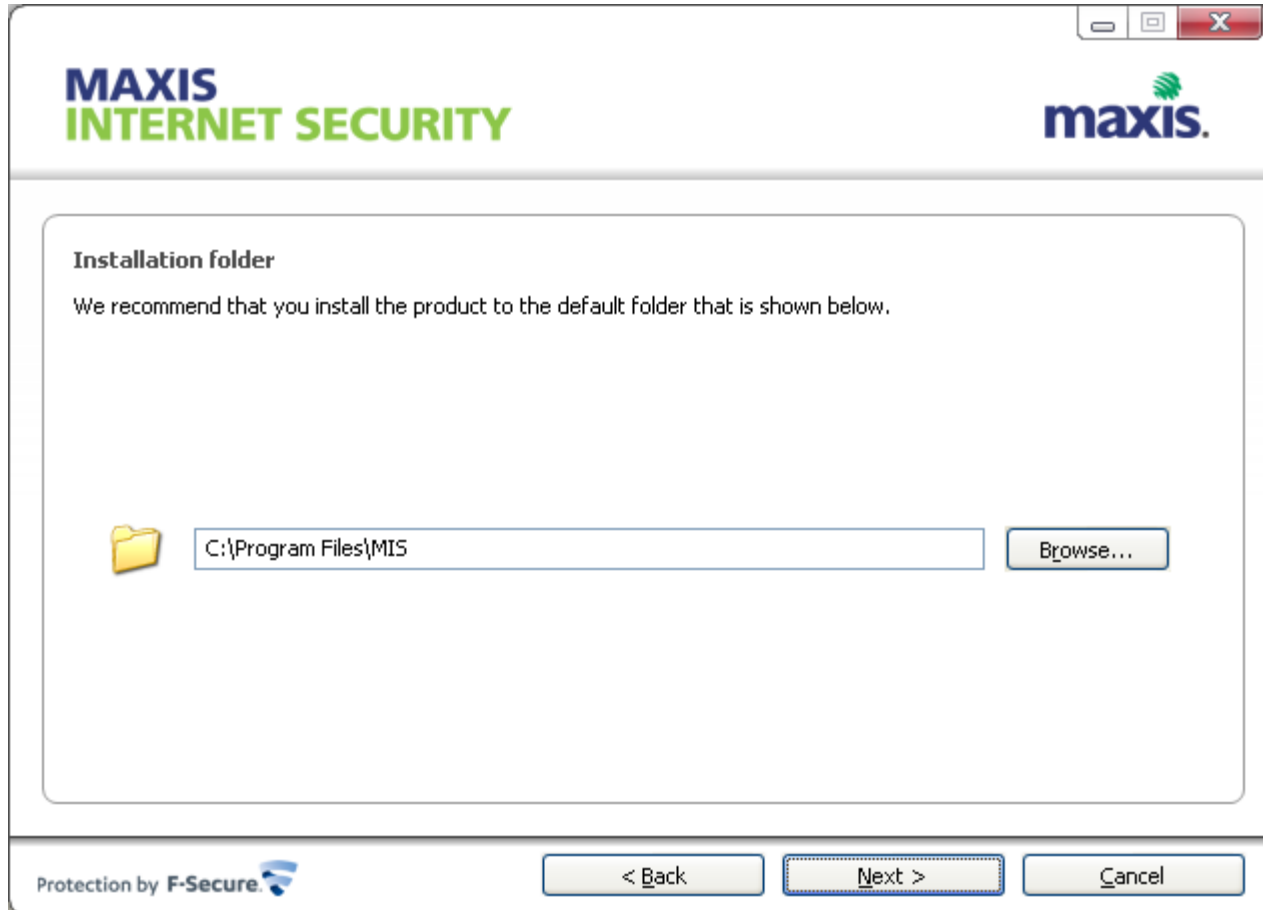
Full installation without Parental Control
Install all security features except Parental Control. Select this option if your computer is not used by children that need to be protected while using the Internet.

Protection by **F-Secure**

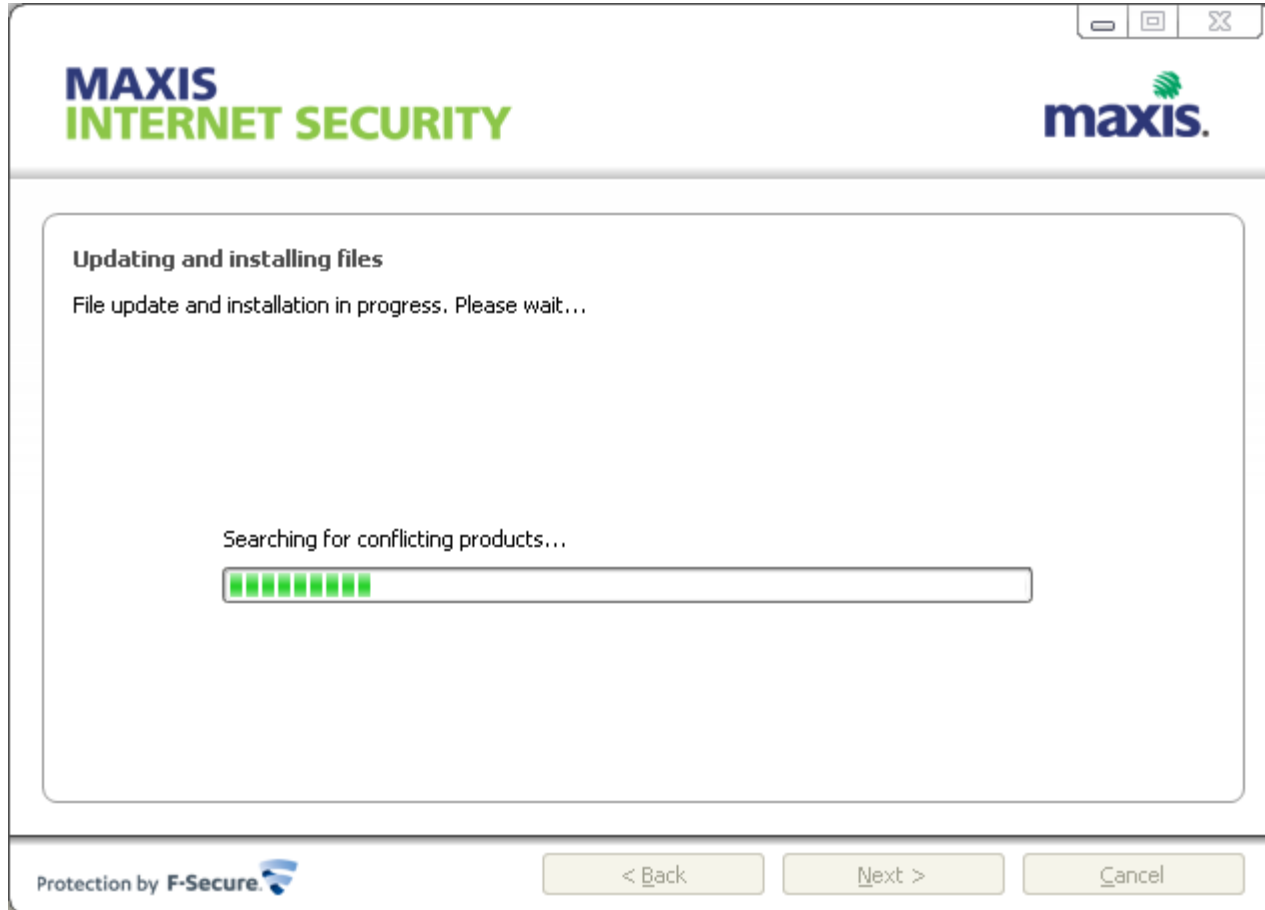
< Back Next > Cancel

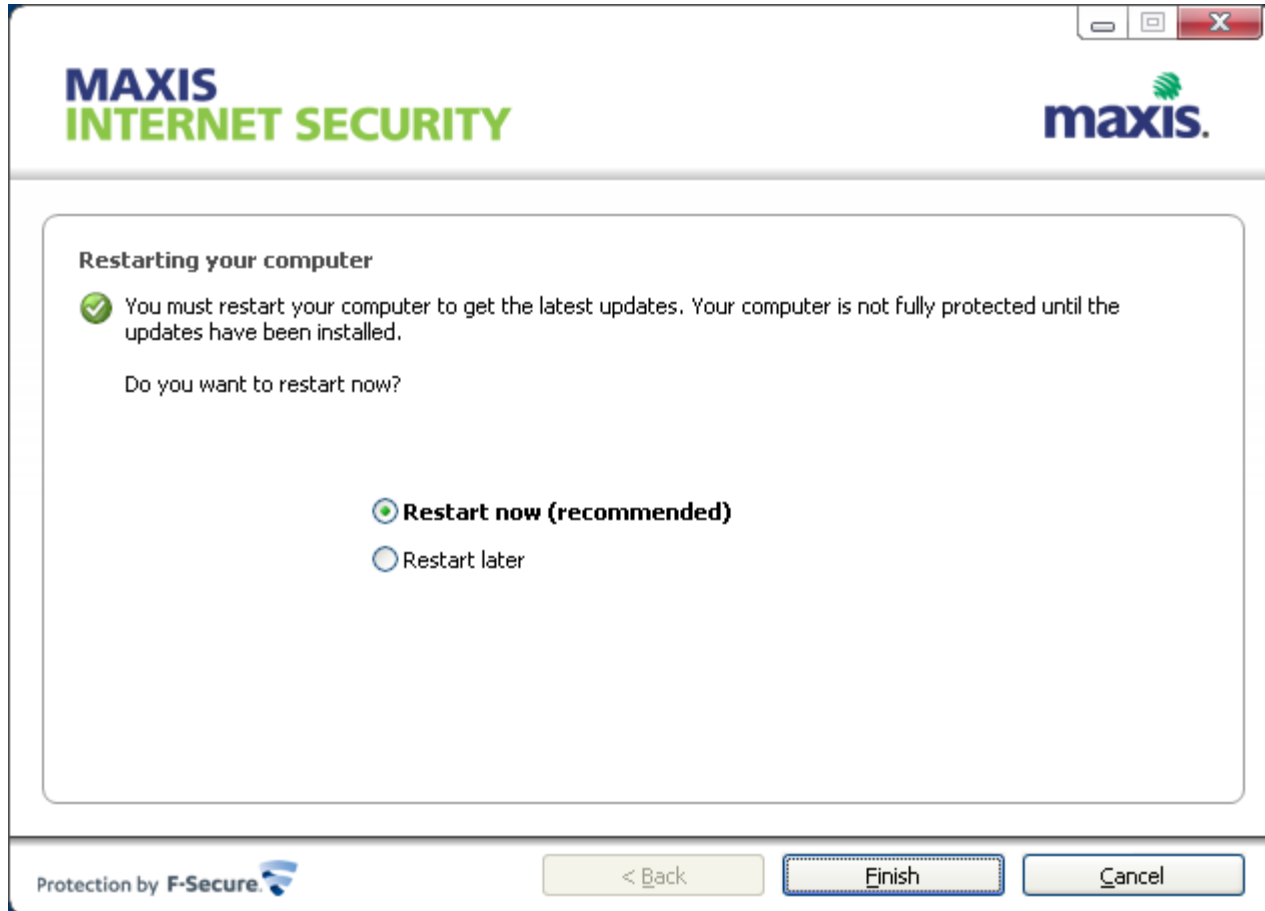


Installation Guide for Maxis Internet Security

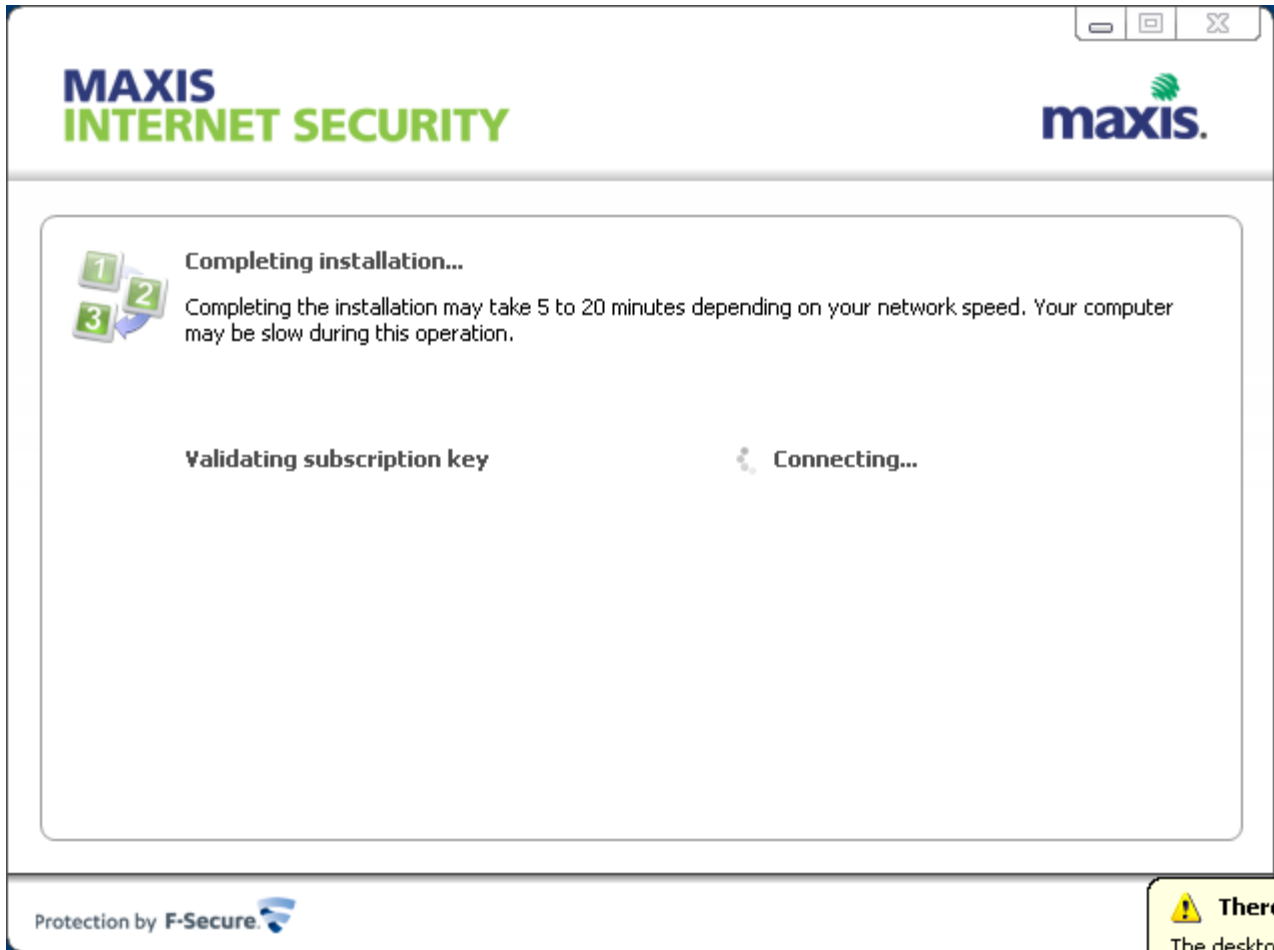


Installation Guide for Maxis Internet Security



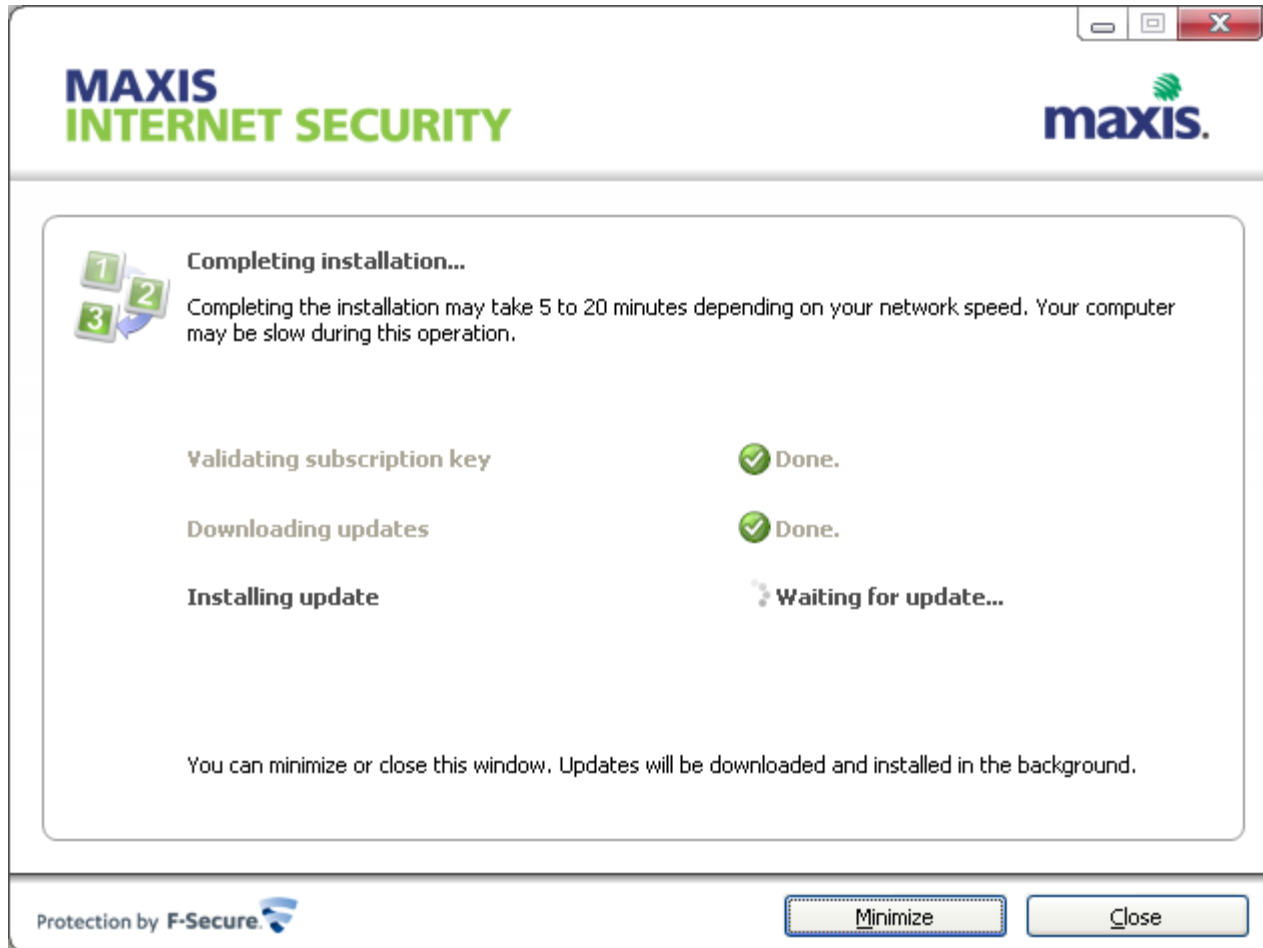


Installation Guide for Maxis Internet Security

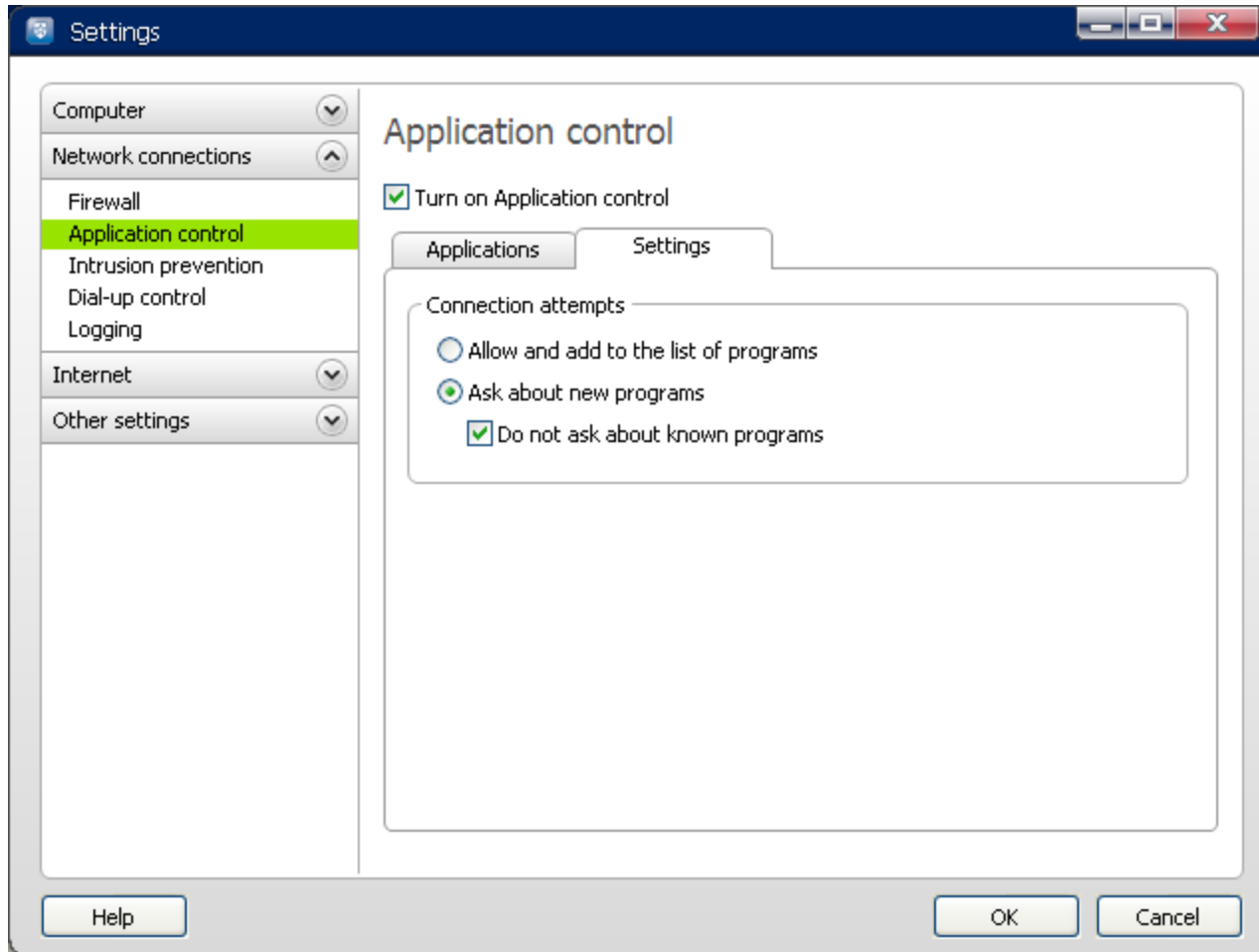


The screenshot shows a window titled "MAXIS INTERNET SECURITY" with the "maxis." logo in the top right corner. The main content area displays a progress indicator with three numbered steps (1, 2, 3) and the text "Completing installation...". Below this, it states: "Completing the installation may take 5 to 20 minutes depending on your network speed. Your computer may be slow during this operation." At the bottom of the main area, there are two status indicators: "Validating subscription key" and "Connecting...". The bottom left corner of the window shows "Protection by F-Secure" with the F-Secure logo. The bottom right corner features a yellow warning icon and the text "There" and "The deskto".

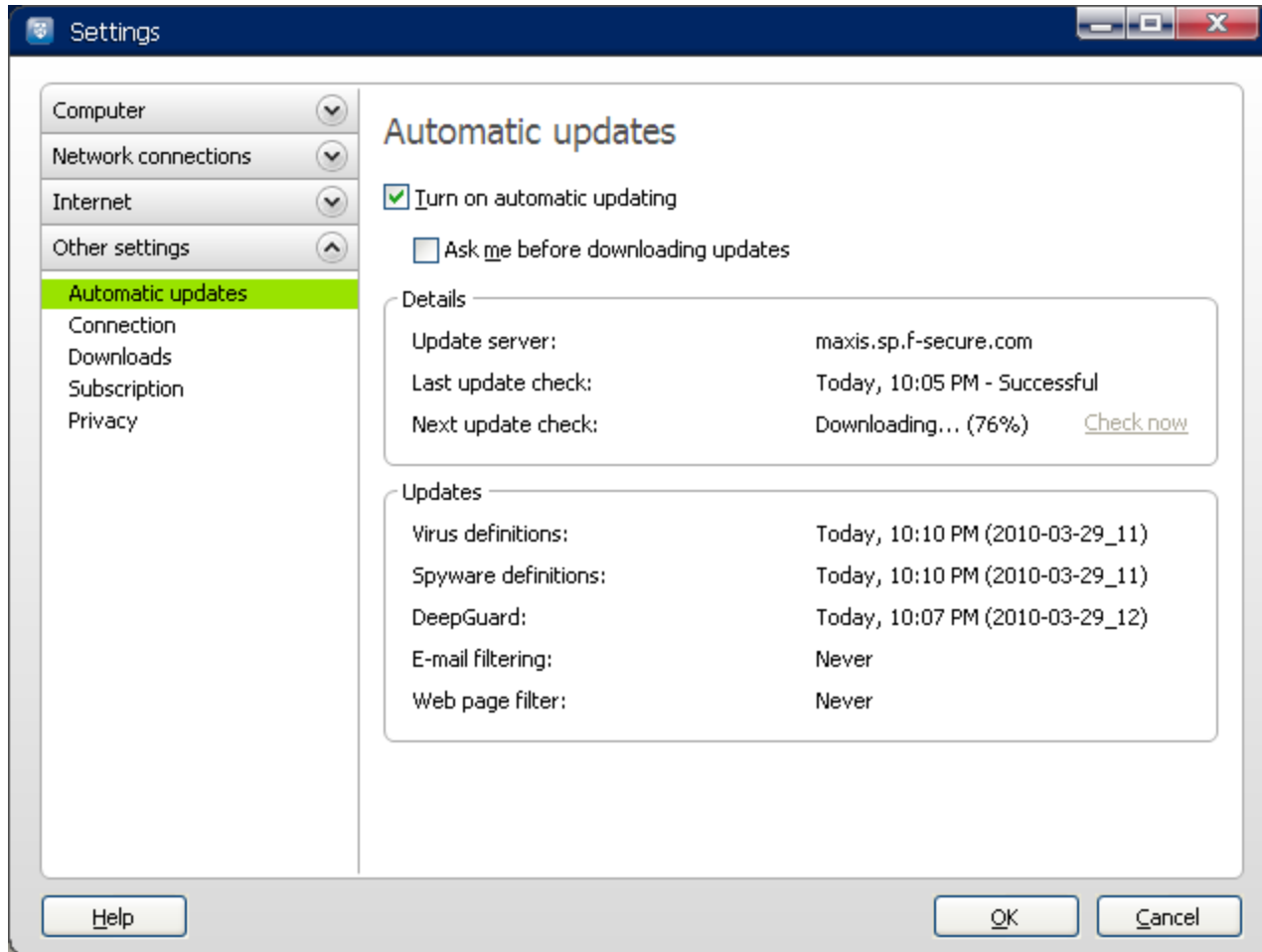
Installation Guide for Maxis Internet Security



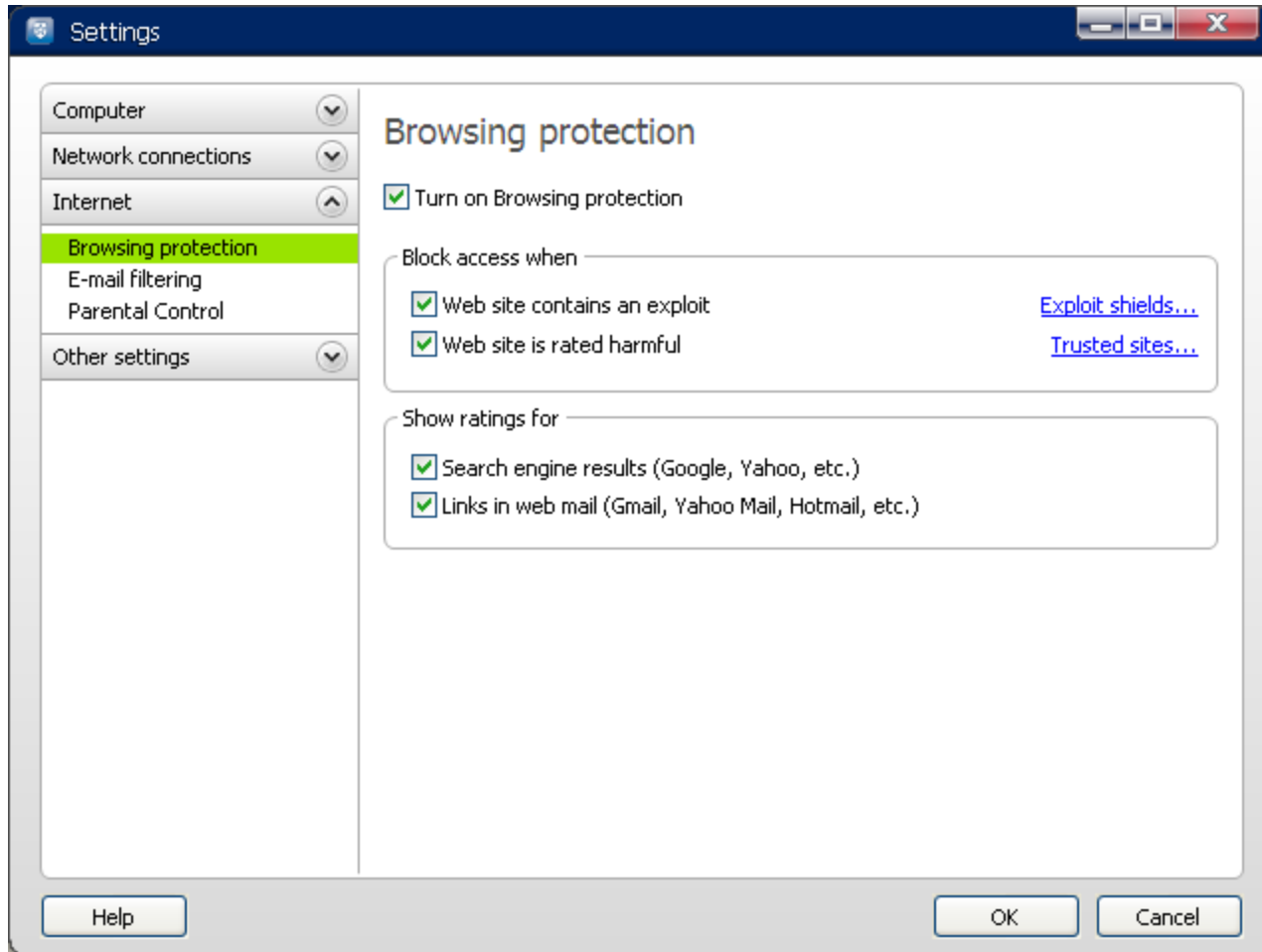
Installation Guide for Maxis Internet Security



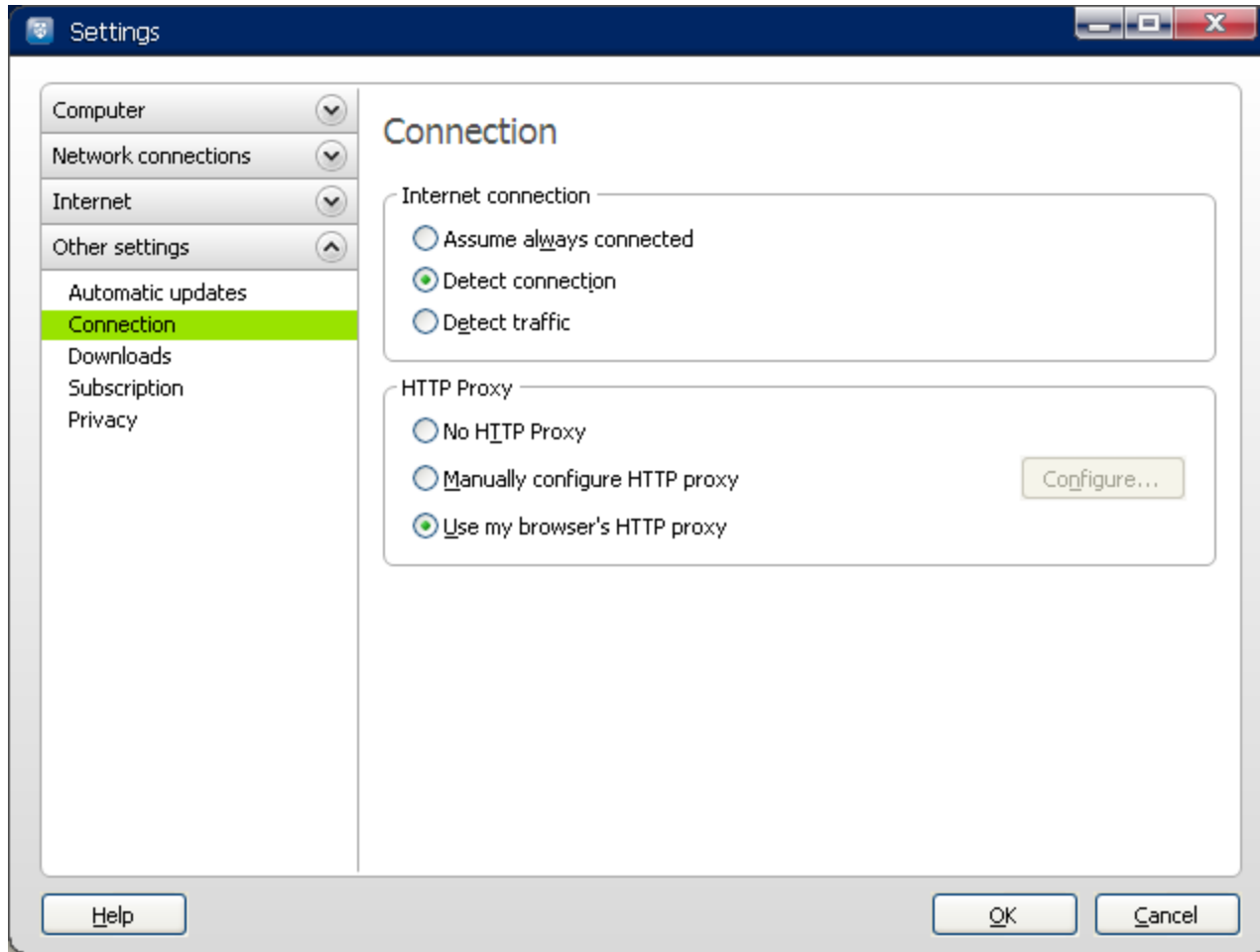
Installation Guide for Maxis Internet Security



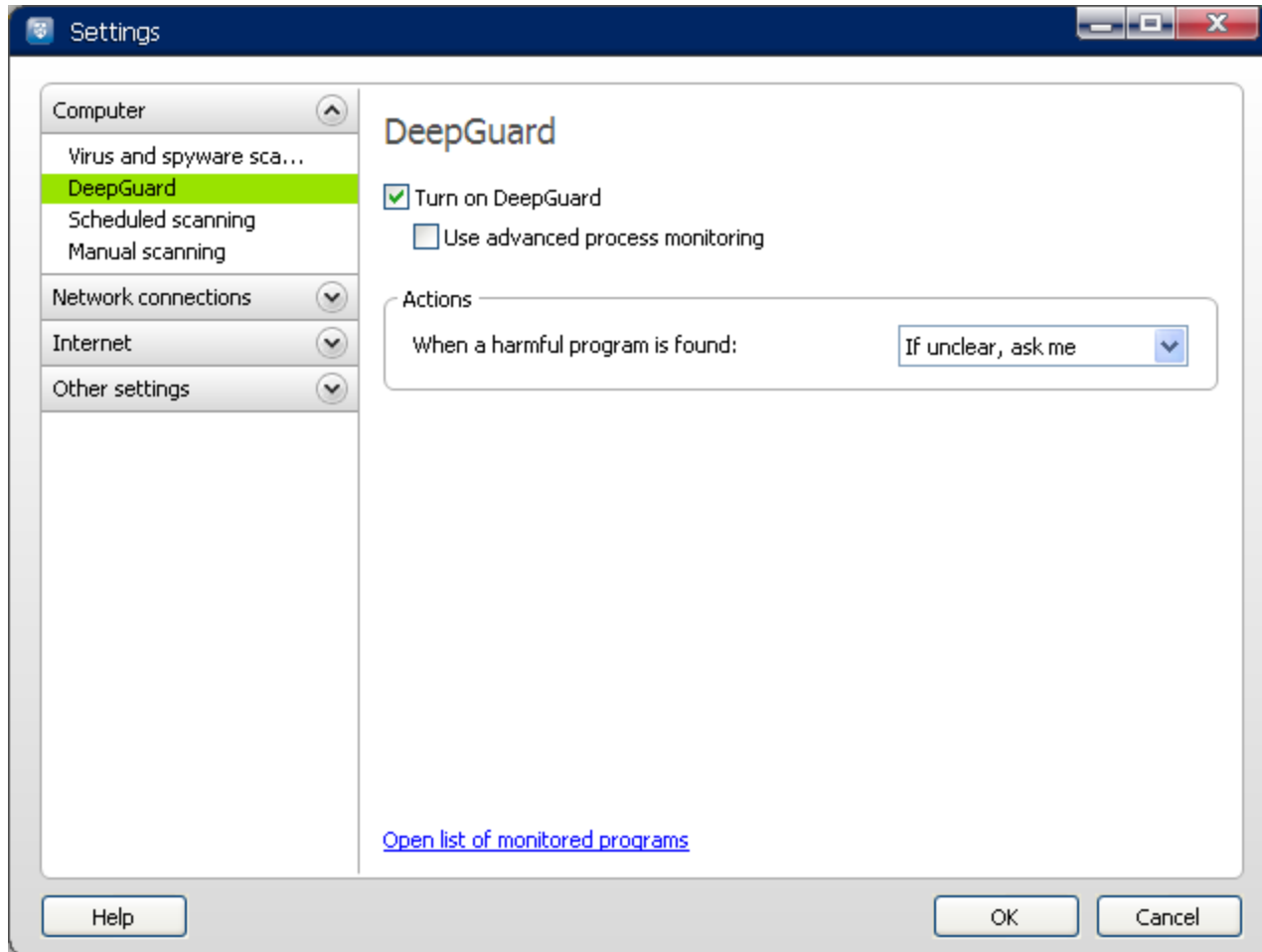
Installation Guide for Maxis Internet Security



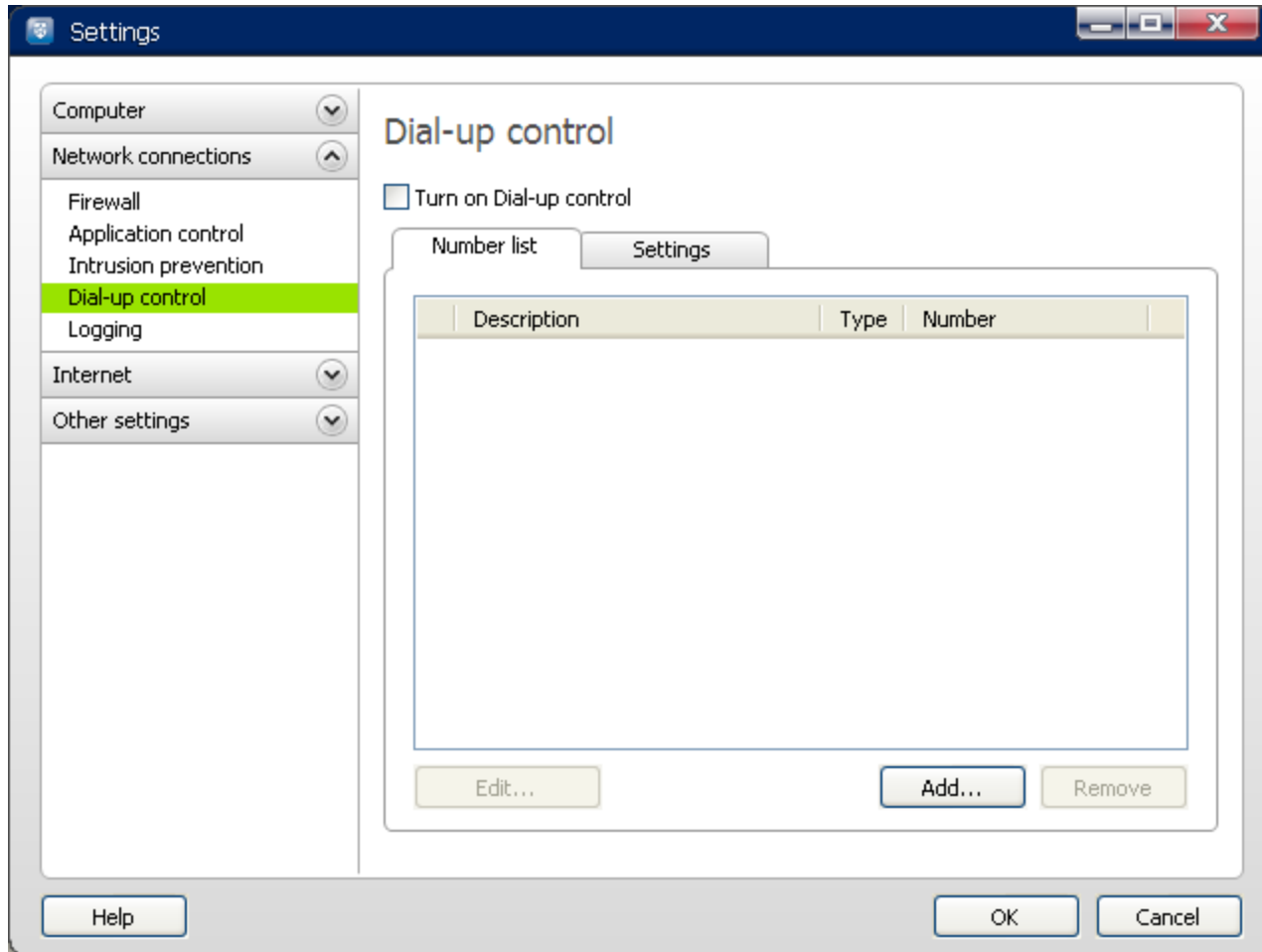
Installation Guide for Maxis Internet Security



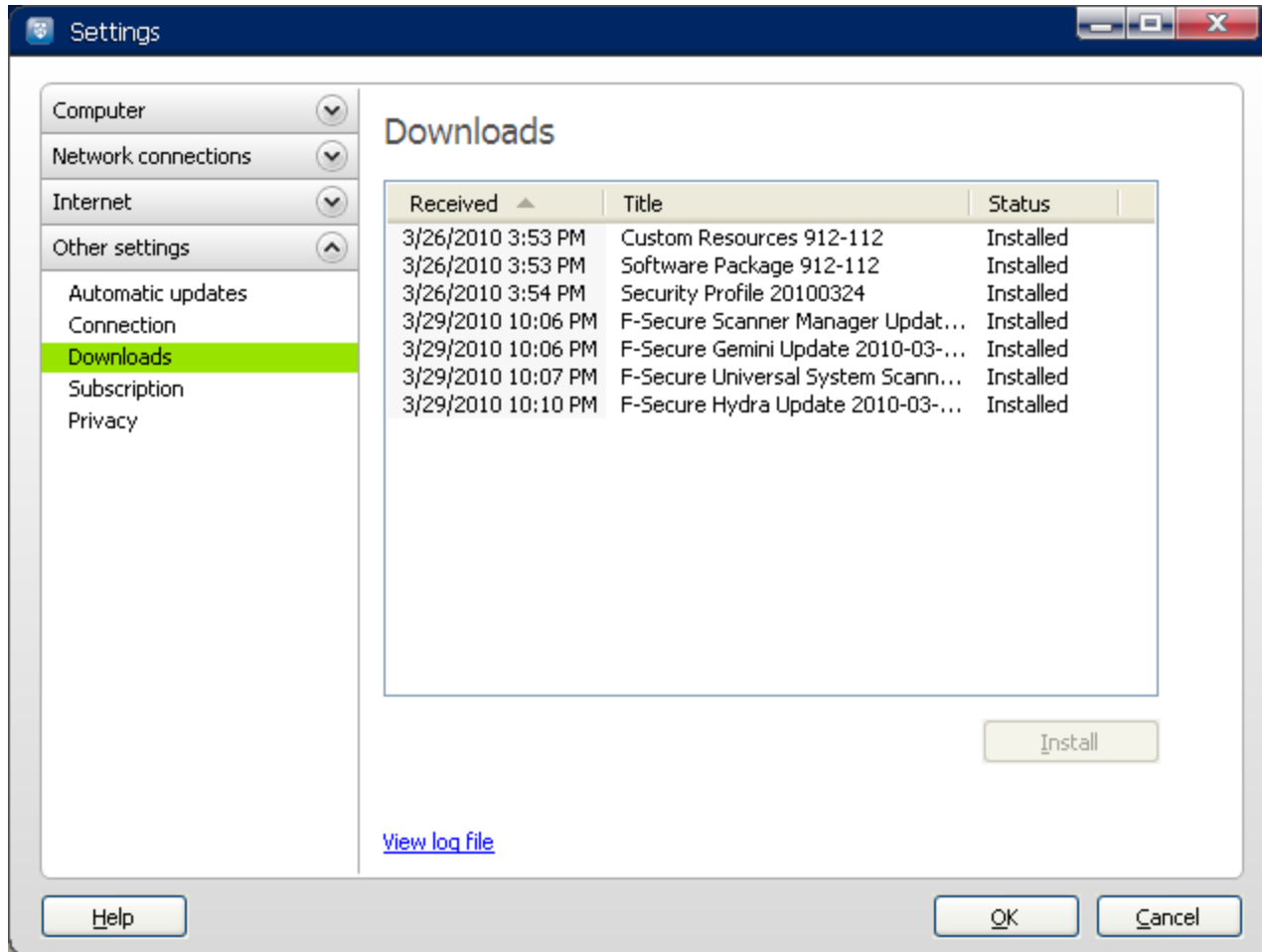
Installation Guide for Maxis Internet Security



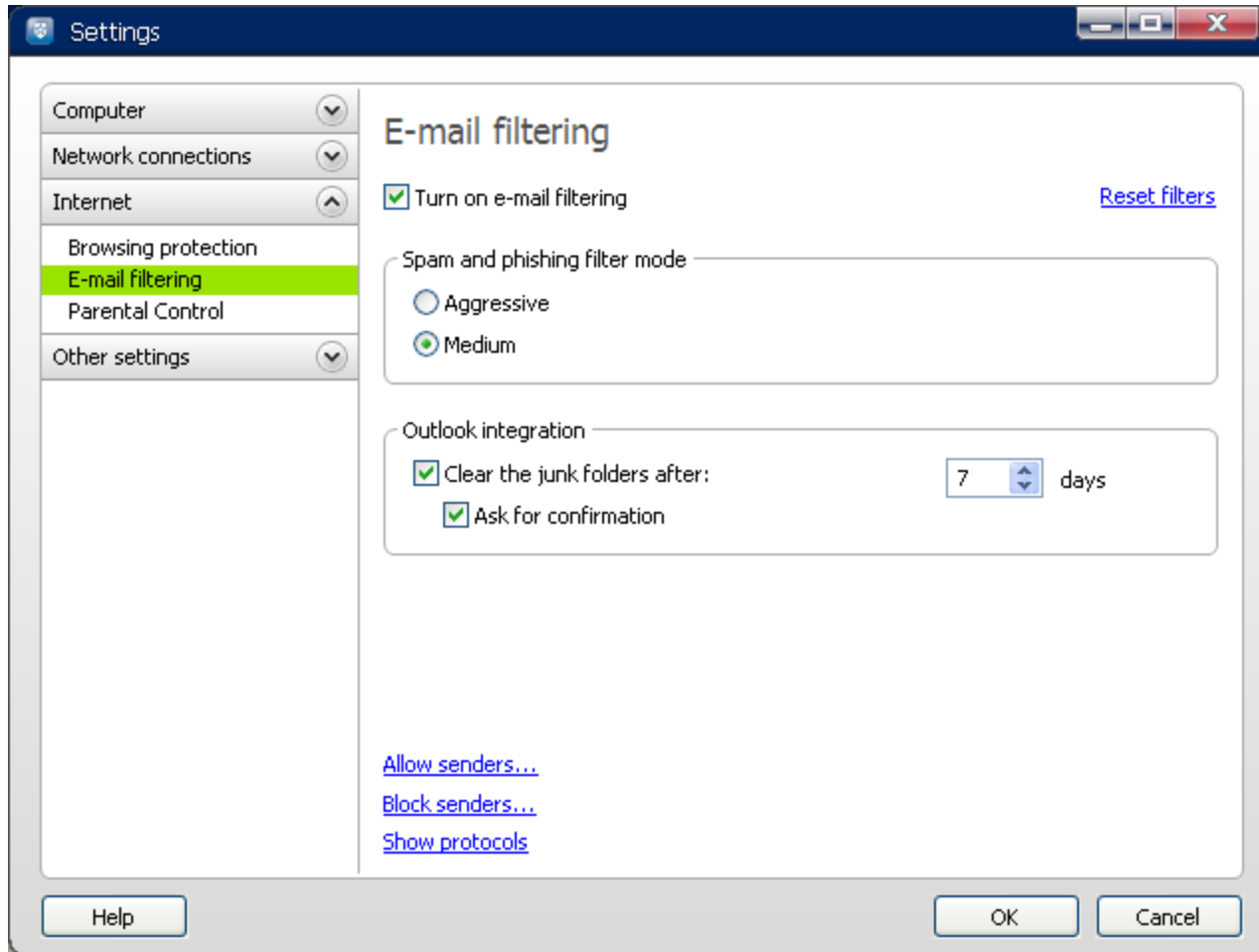
Installation Guide for Maxis Internet Security



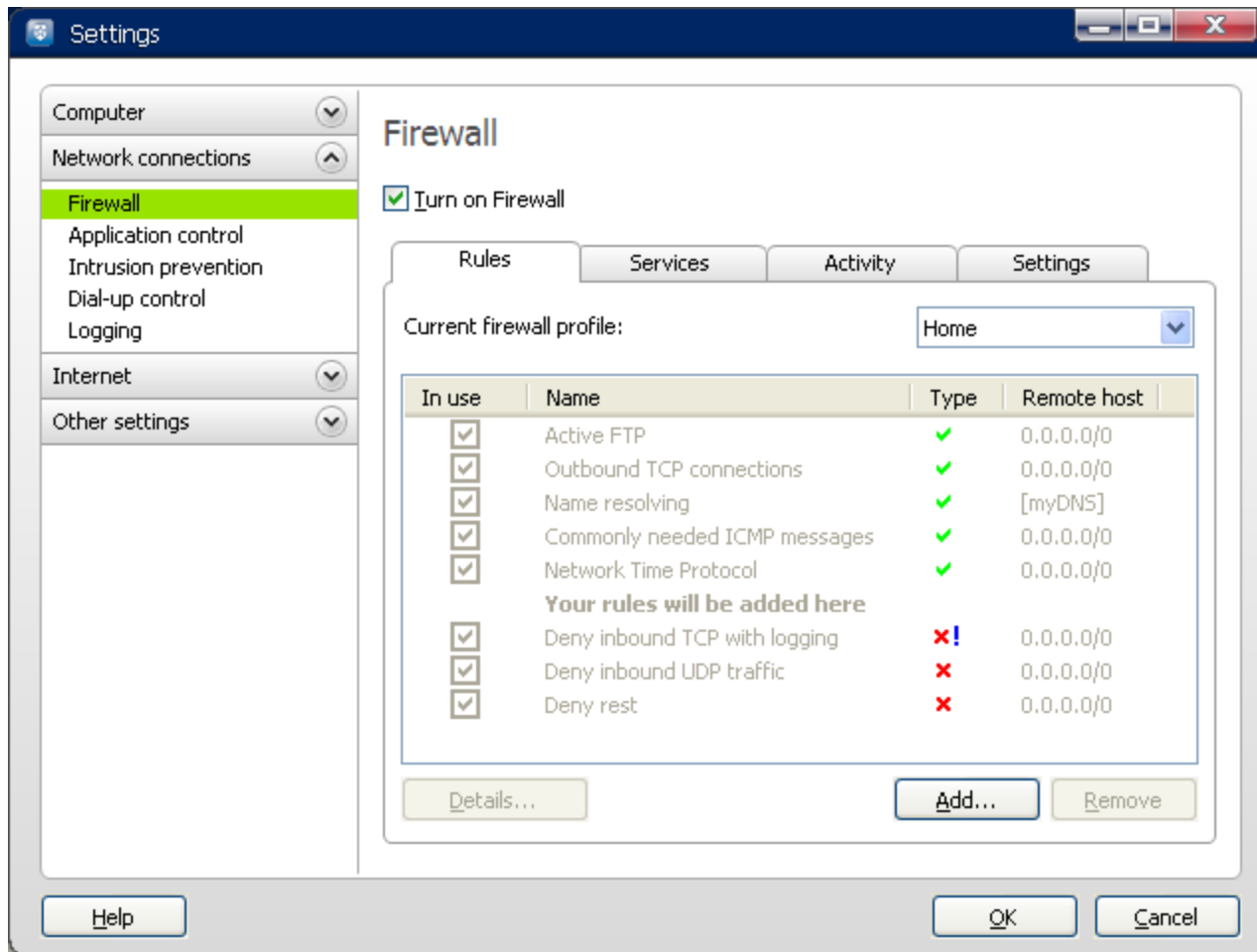
Installation Guide for Maxis Internet Security



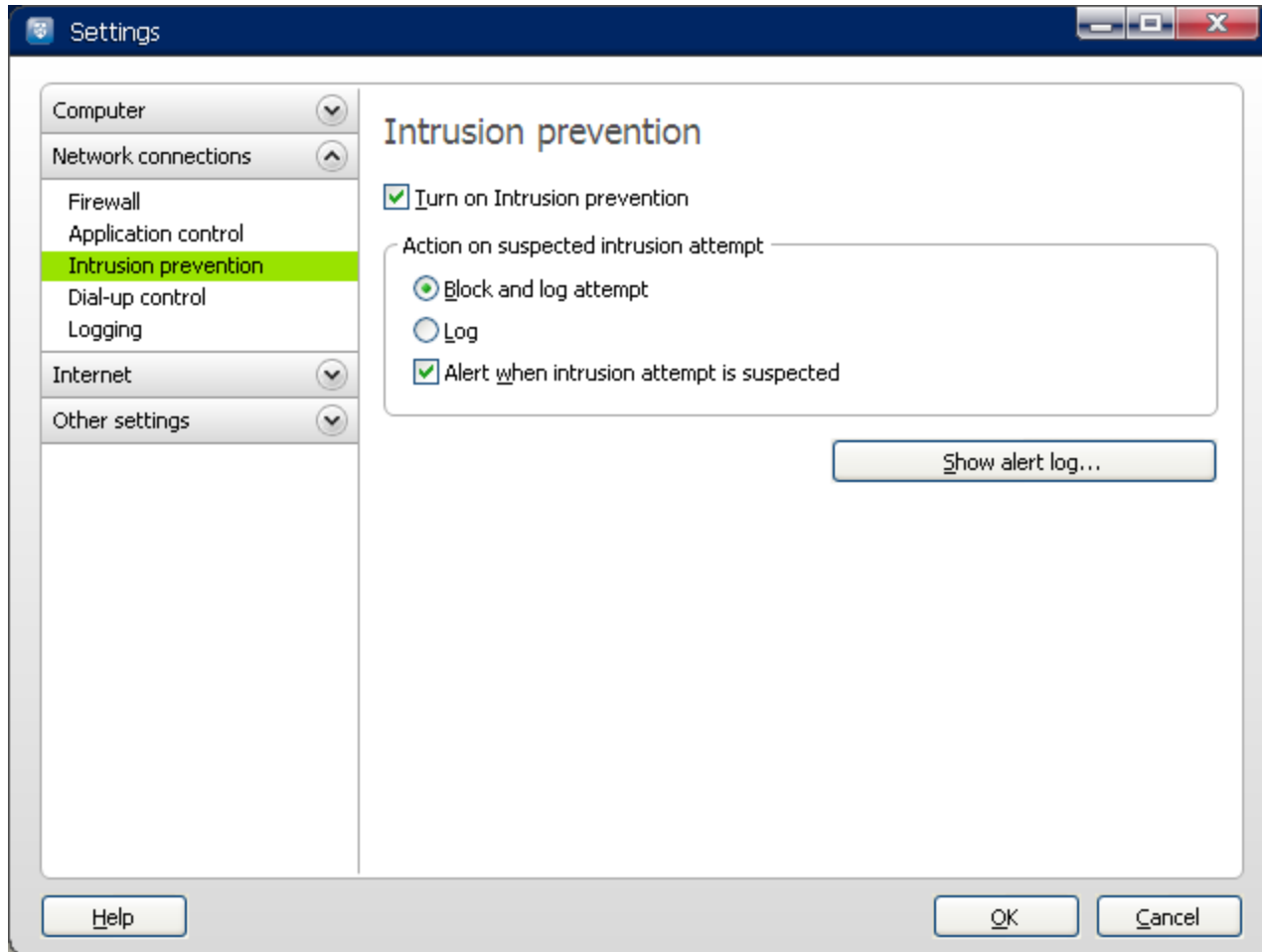
Installation Guide for Maxis Internet Security



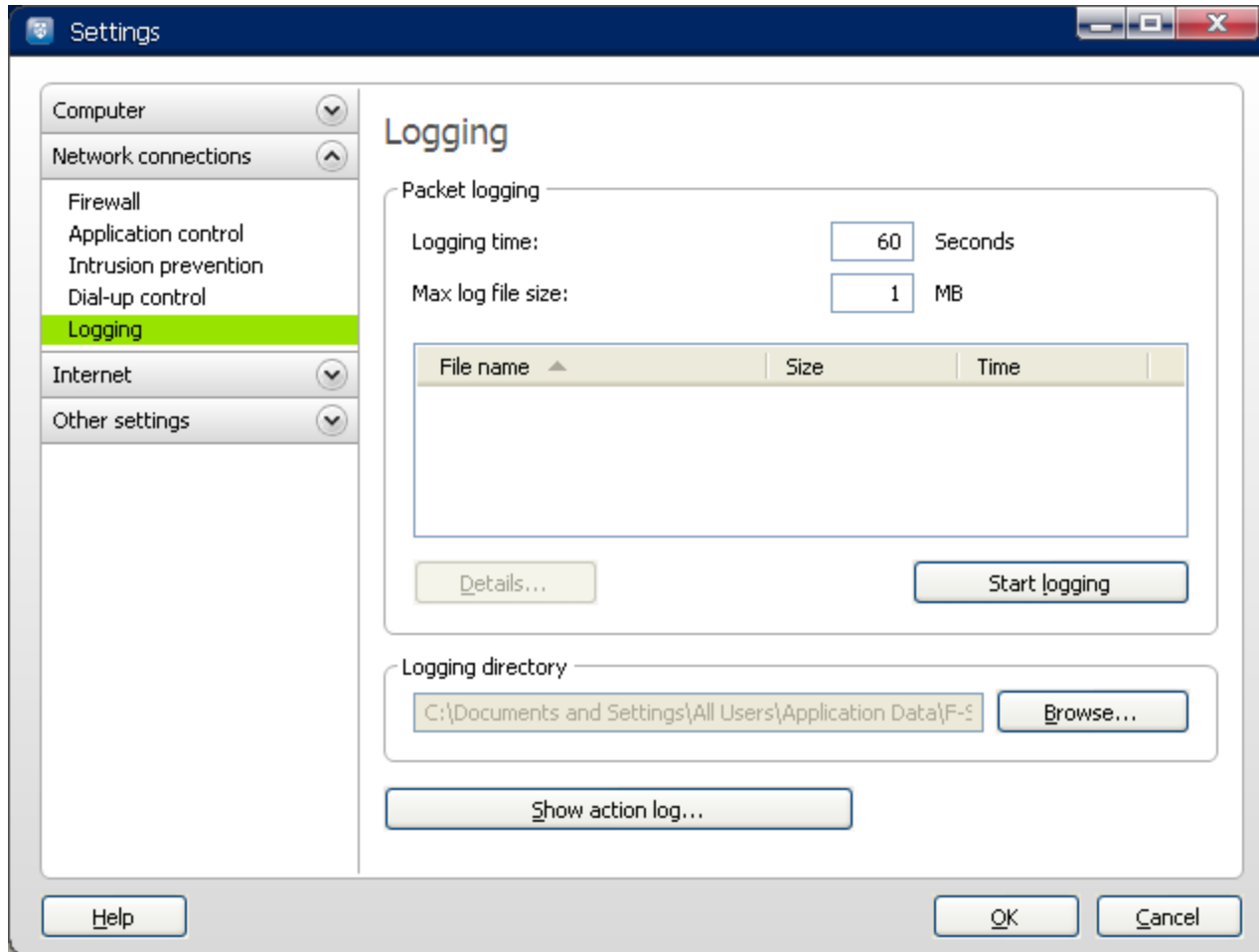
Installation Guide for Maxis Internet Security



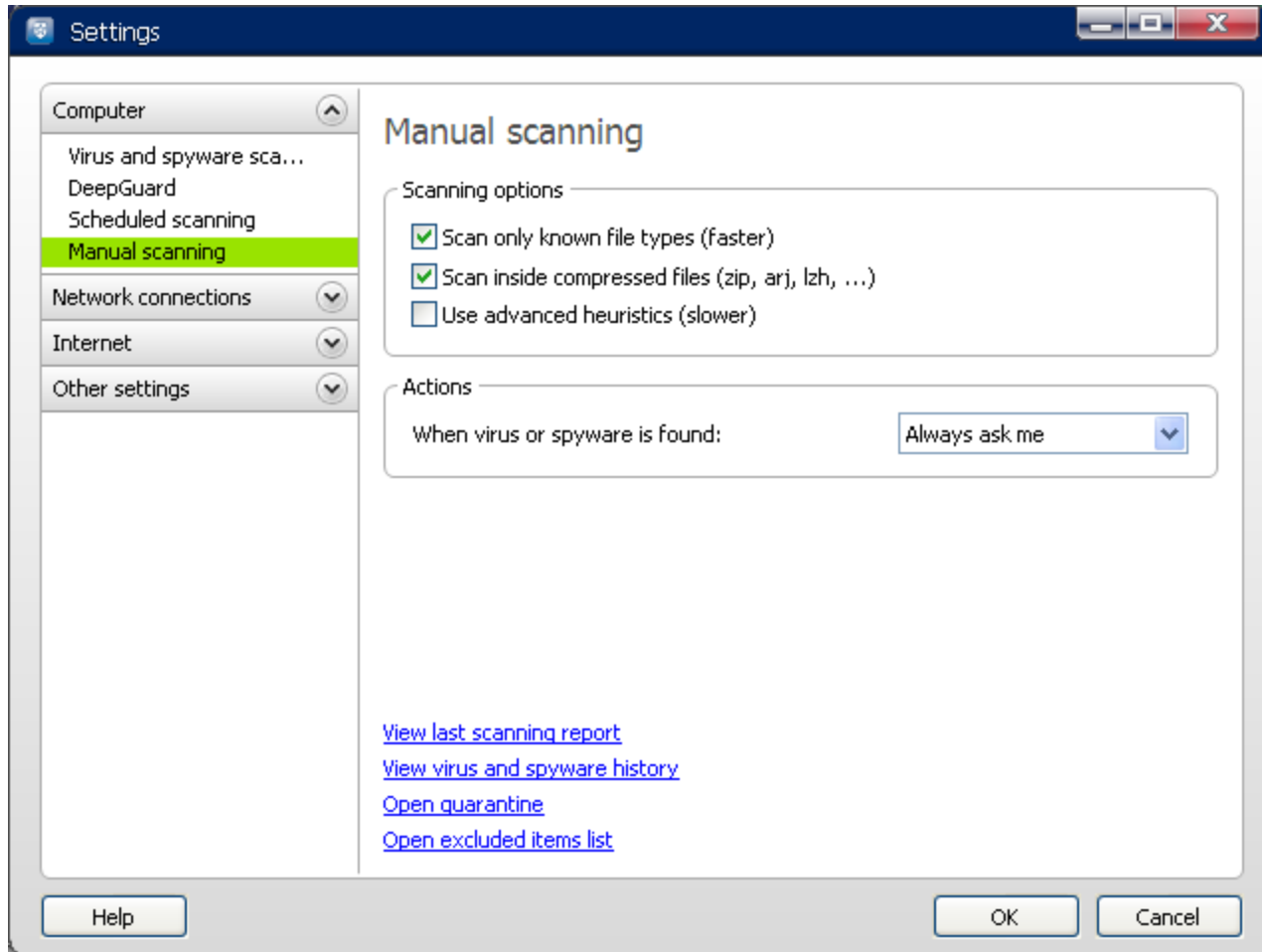
Installation Guide for Maxis Internet Security



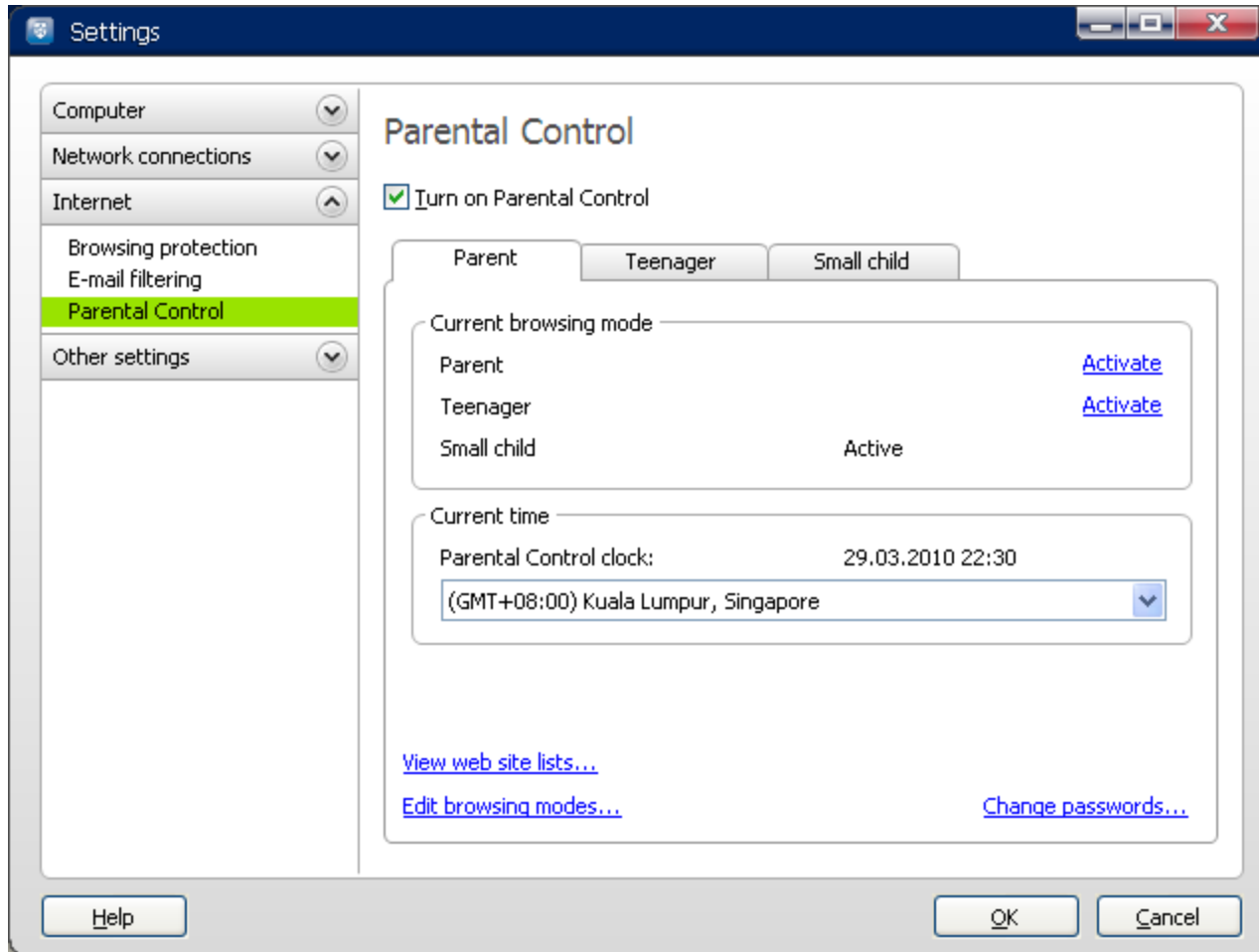
Installation Guide for Maxis Internet Security



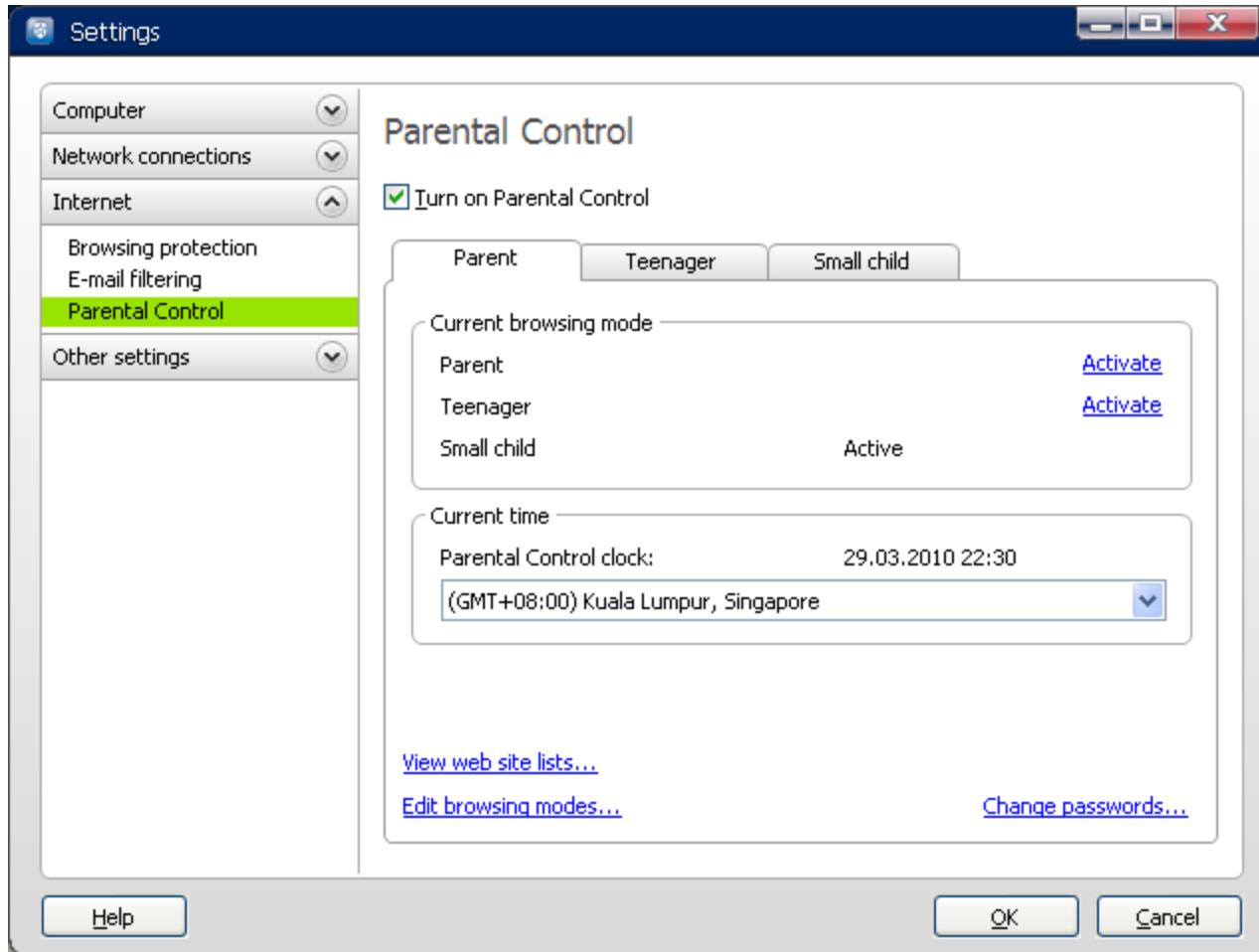
Installation Guide for Maxis Internet Security



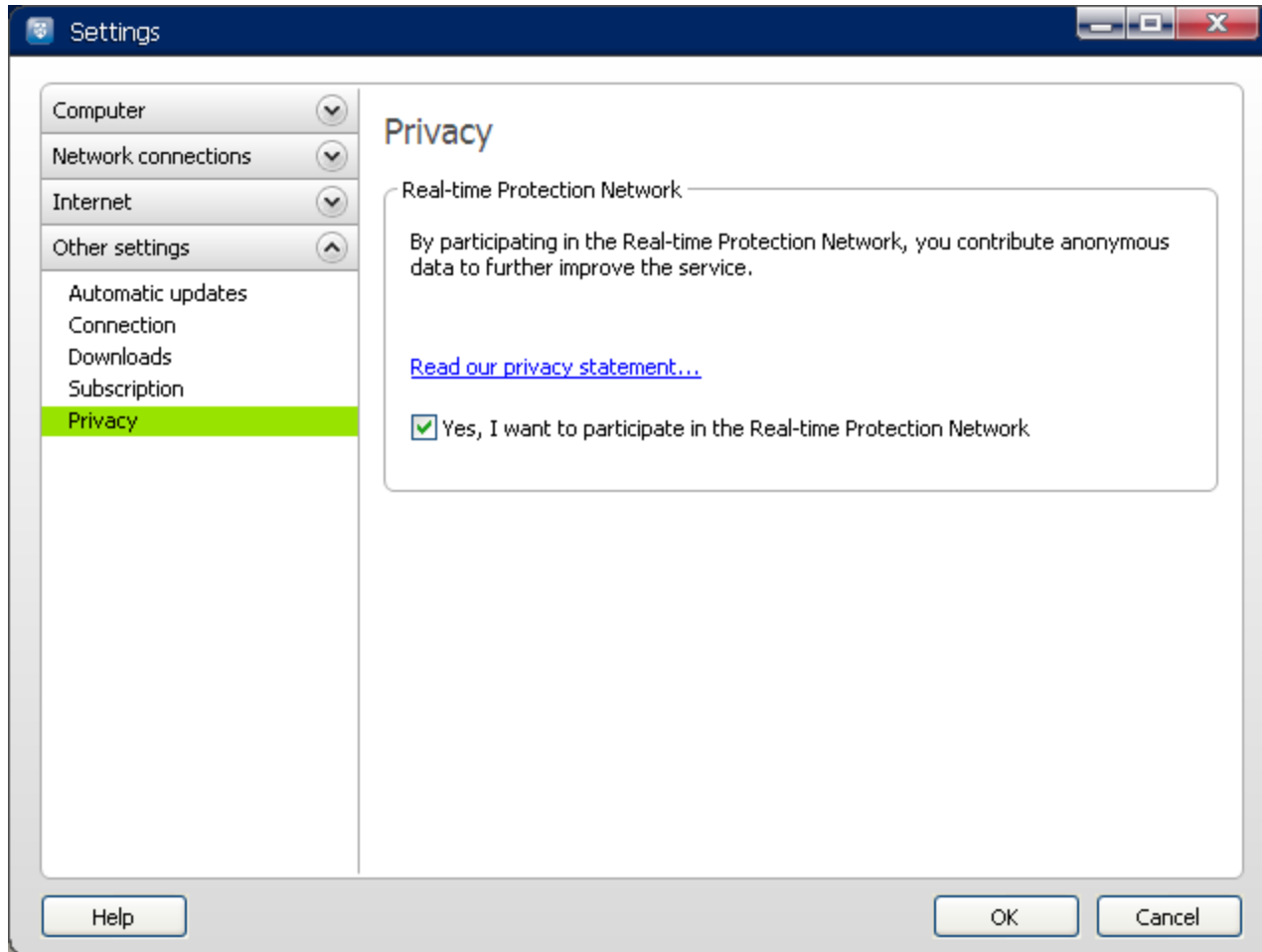
Installation Guide for Maxis Internet Security



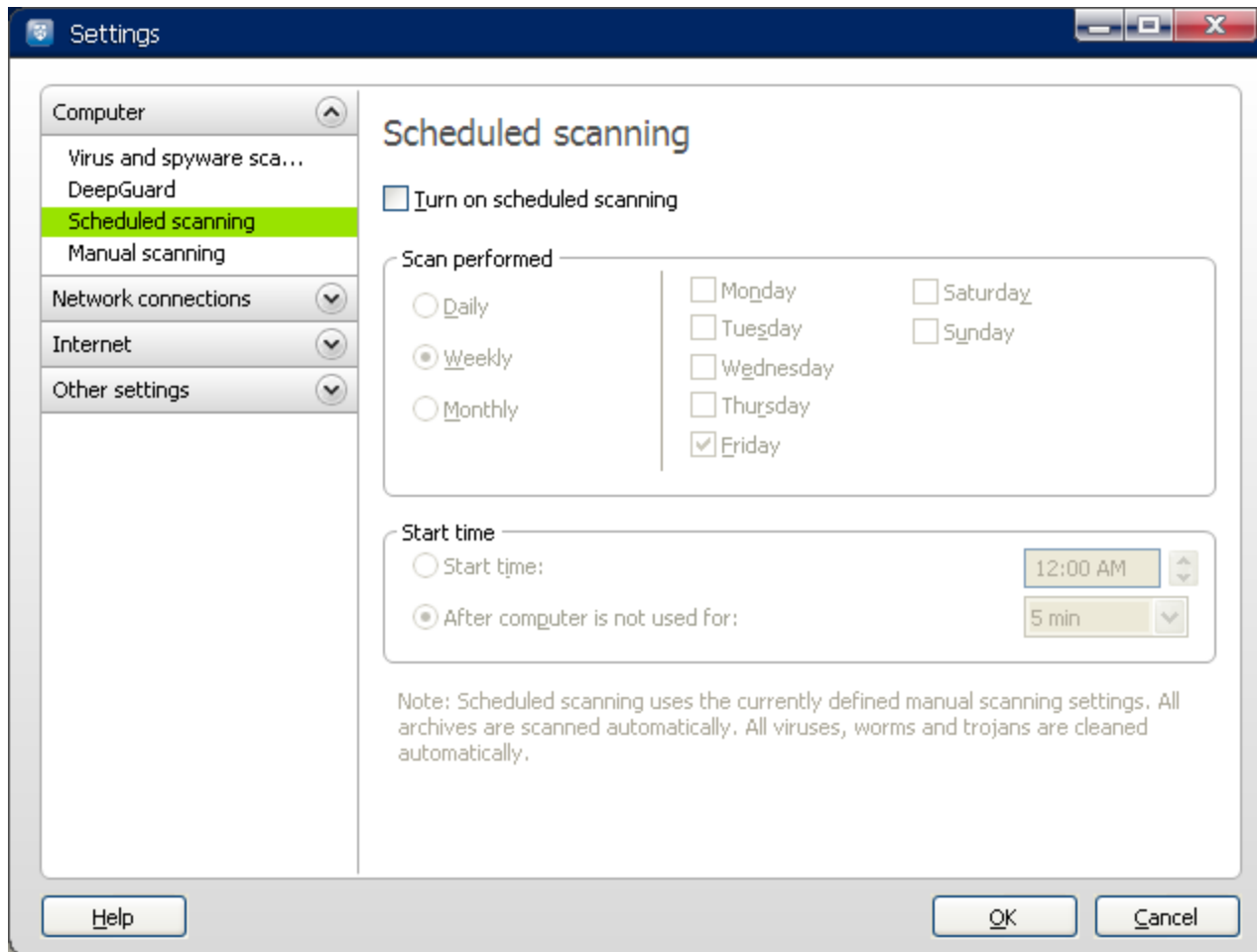
Installation Guide for Maxis Internet Security



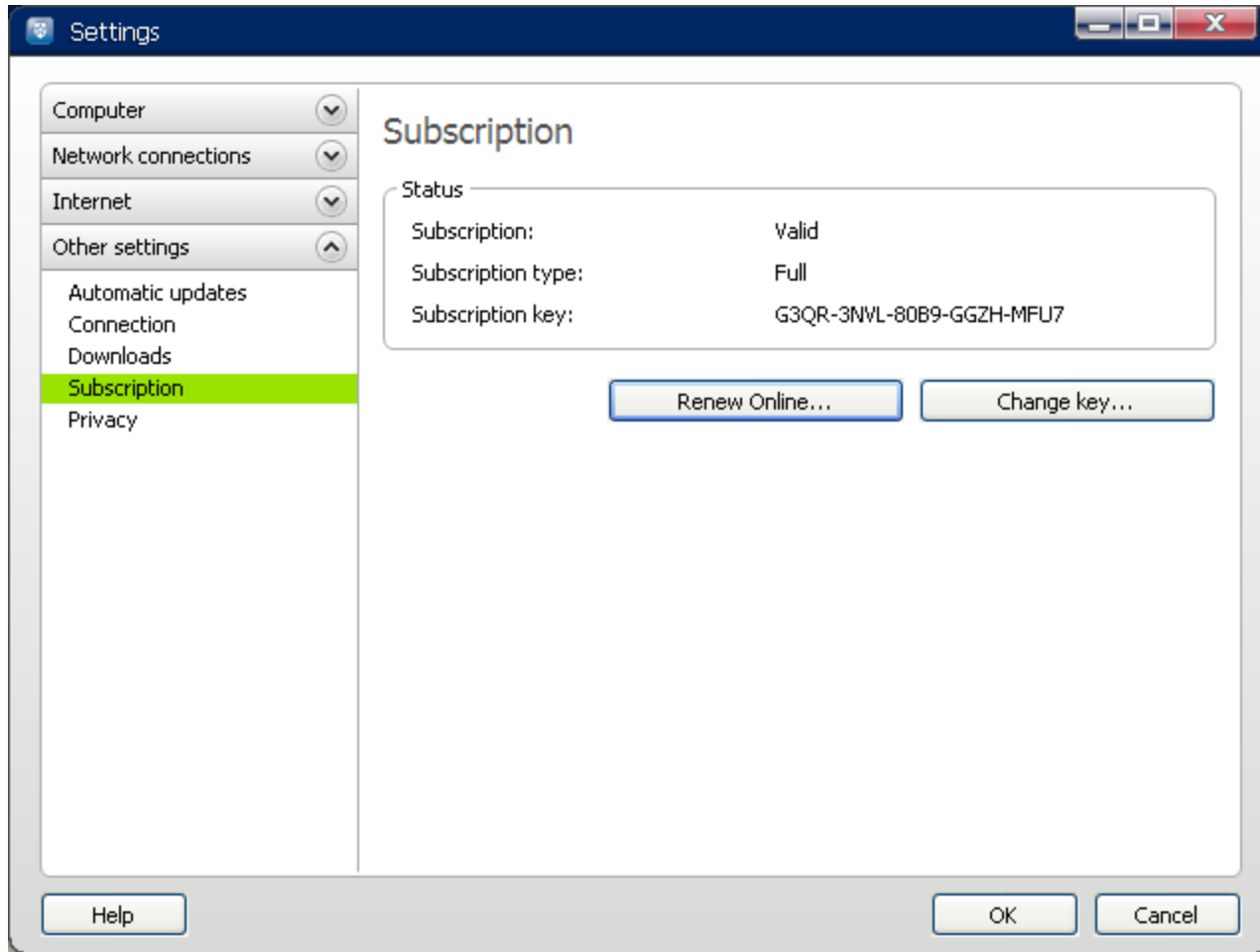
Installation Guide for Maxis Internet Security



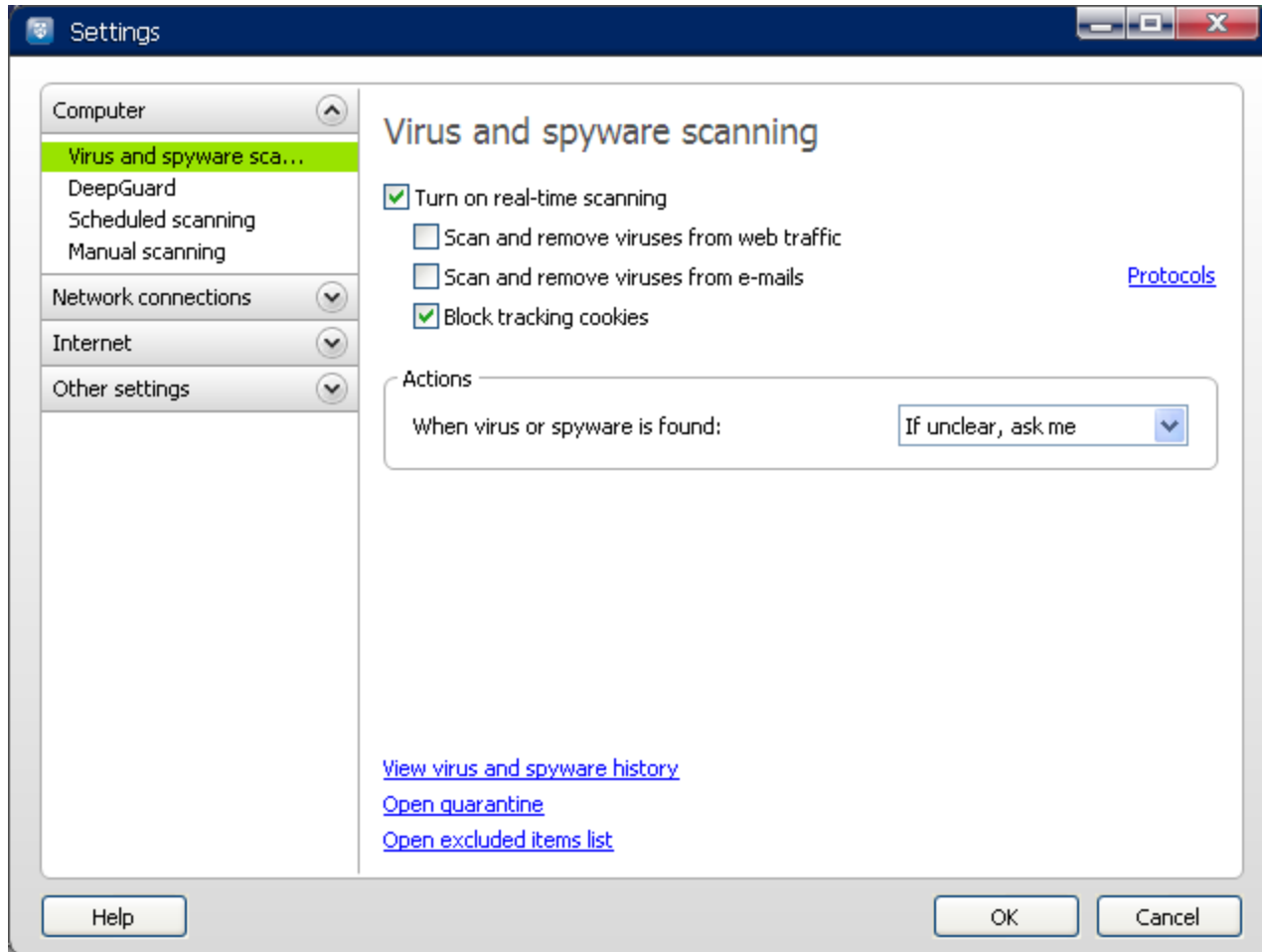
Installation Guide for Maxis Internet Security



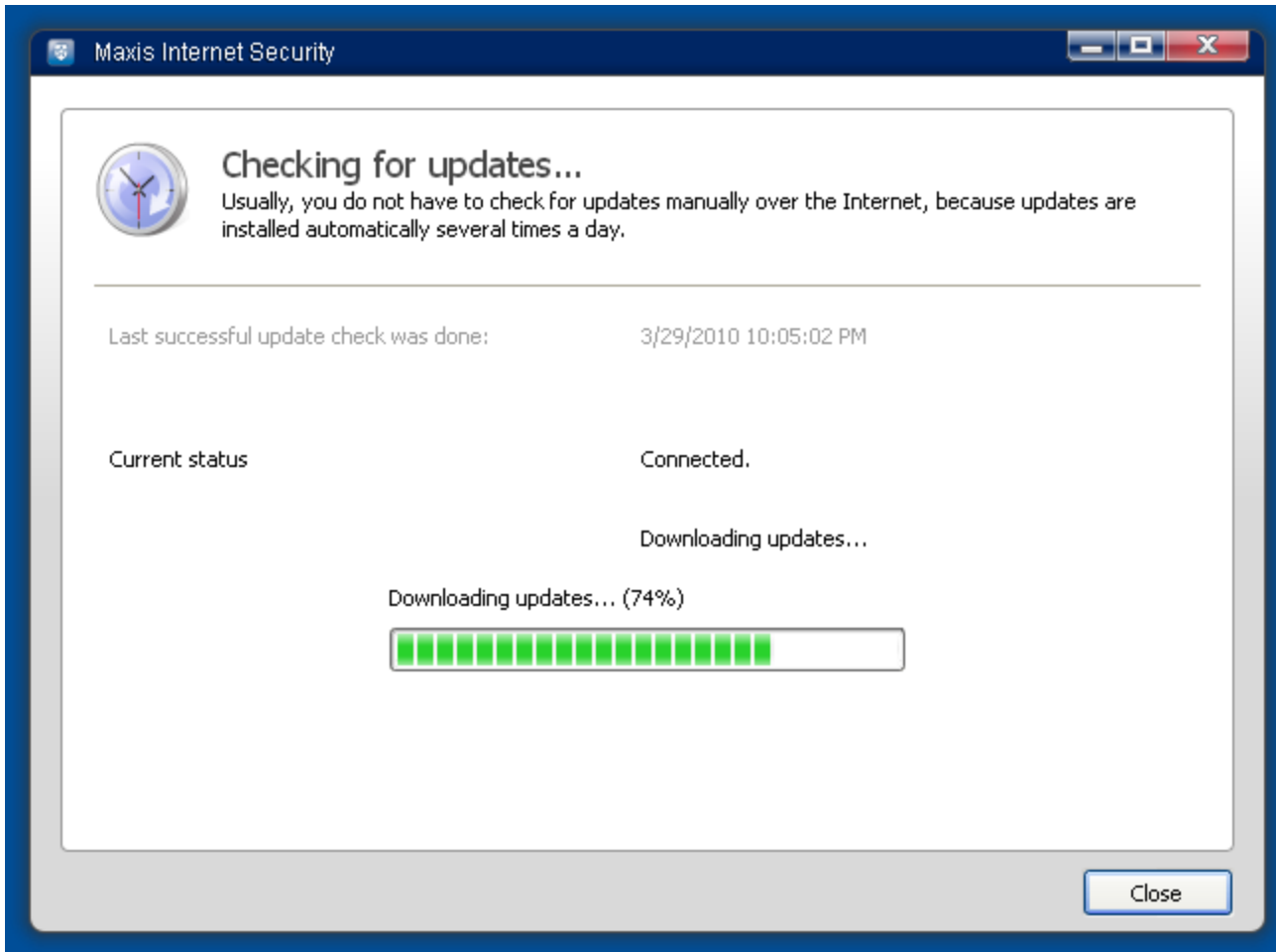
Installation Guide for Maxis Internet Security

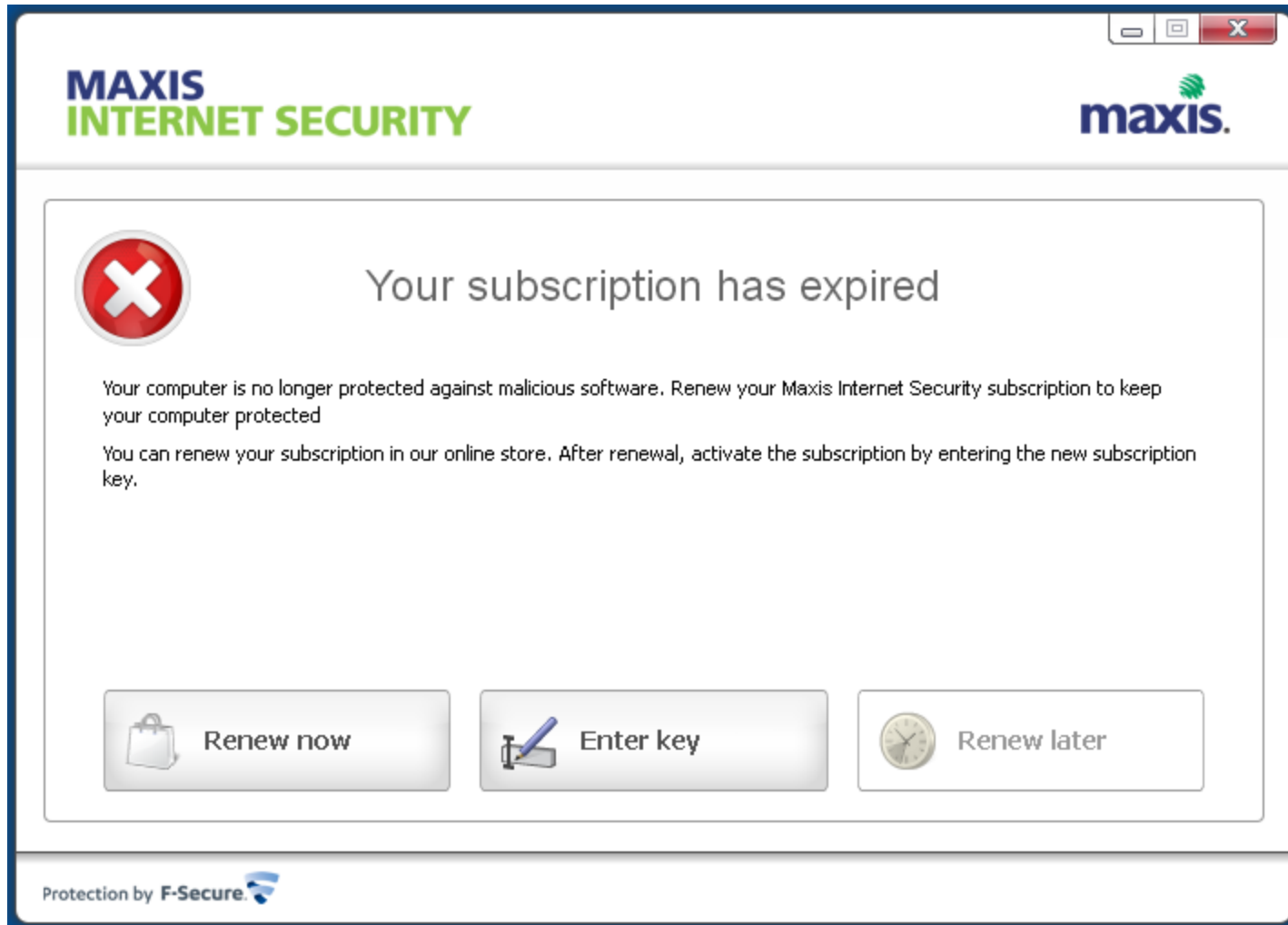


Installation Guide for Maxis Internet Security



Installation Guide for Maxis Internet Security

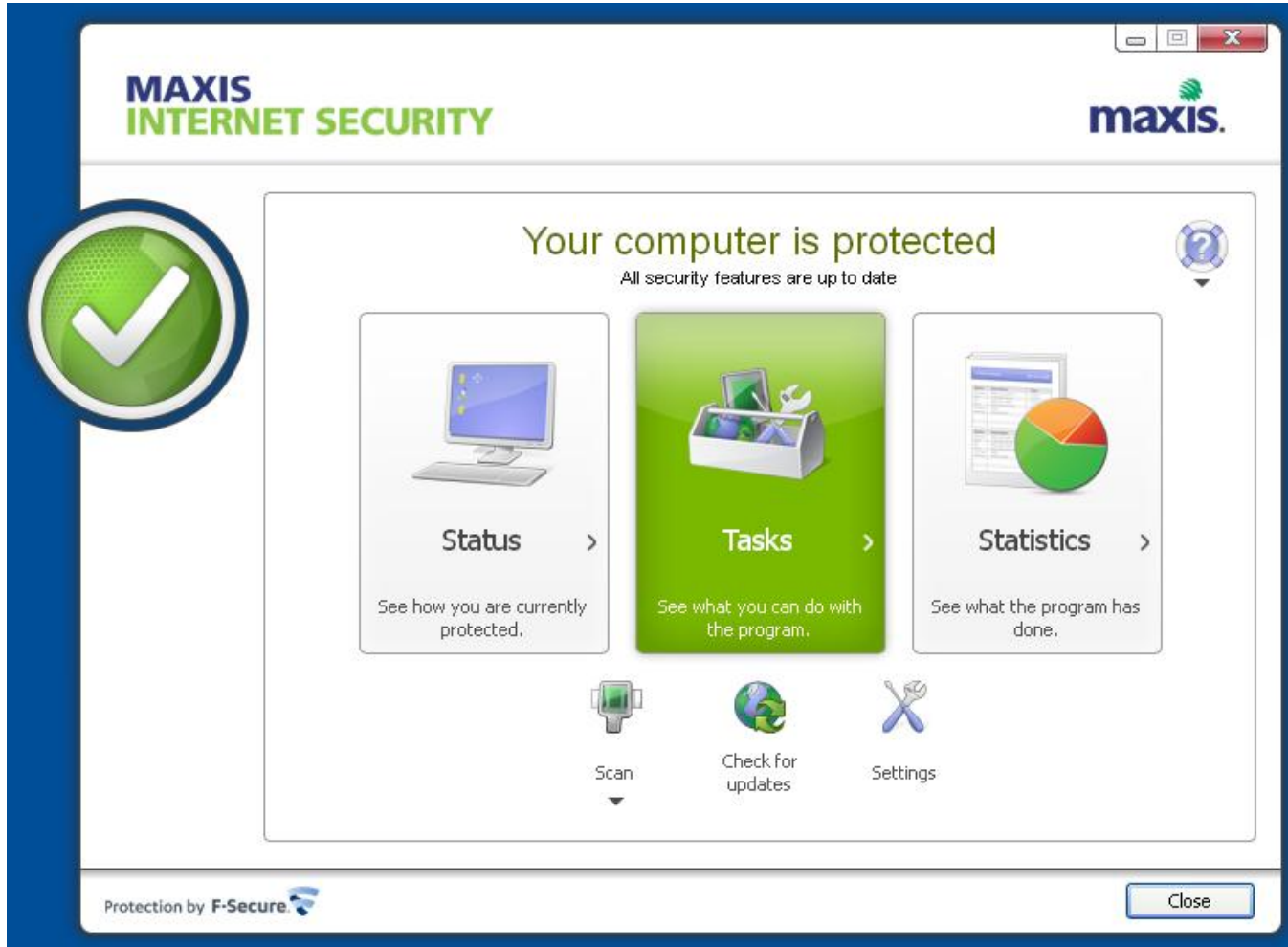




Installation Guide for Maxis Internet Security

The screenshot shows the Maxis Internet Security application window. The title bar reads "MAXIS INTERNET SECURITY" and "maxis.". The main content area displays a large green checkmark icon on the left and a central message: "Your computer is protected" with the subtext "All security features are up to date". Below this, there are three main sections: "Status" (with a computer icon and description "See how you are currently protected."), "Tasks" (with a task tray icon and description "See what you can do with the program."), and "Statistics" (with a pie chart icon and description "See what the program has done."). At the bottom of the main area are three icons: "Scan" (with a scanner icon), "Check for updates" (with a globe icon), and "Settings" (with a wrench icon). The bottom of the window features the text "Protection by F-Secure" and a "Close" button. The Windows taskbar at the bottom shows the Start button, the application icon, and the system tray with the time "10:51 PM".

Installation Guide for Maxis Internet Security



Installation Guide for Maxis Internet Security

MAXIS INTERNET SECURITY

Statistics
Here you can see what the product has done since its installation on 3/29/2010.

- ✓ **Last successful update check** 3/29/2010 10:40:06 PM
- ✓ **Subscription** Valid

Virus and spyware scanning

- Scanned files (1860)
- Cleaned files (0)

Programs

- Allowed (8)
- Blocked from starting (0)

E-mail scanning

- Valid attachments (0)
- Cleaned attachments (0)

E-mail filtering

- Valid e-mails (0)
- Received spam (0)

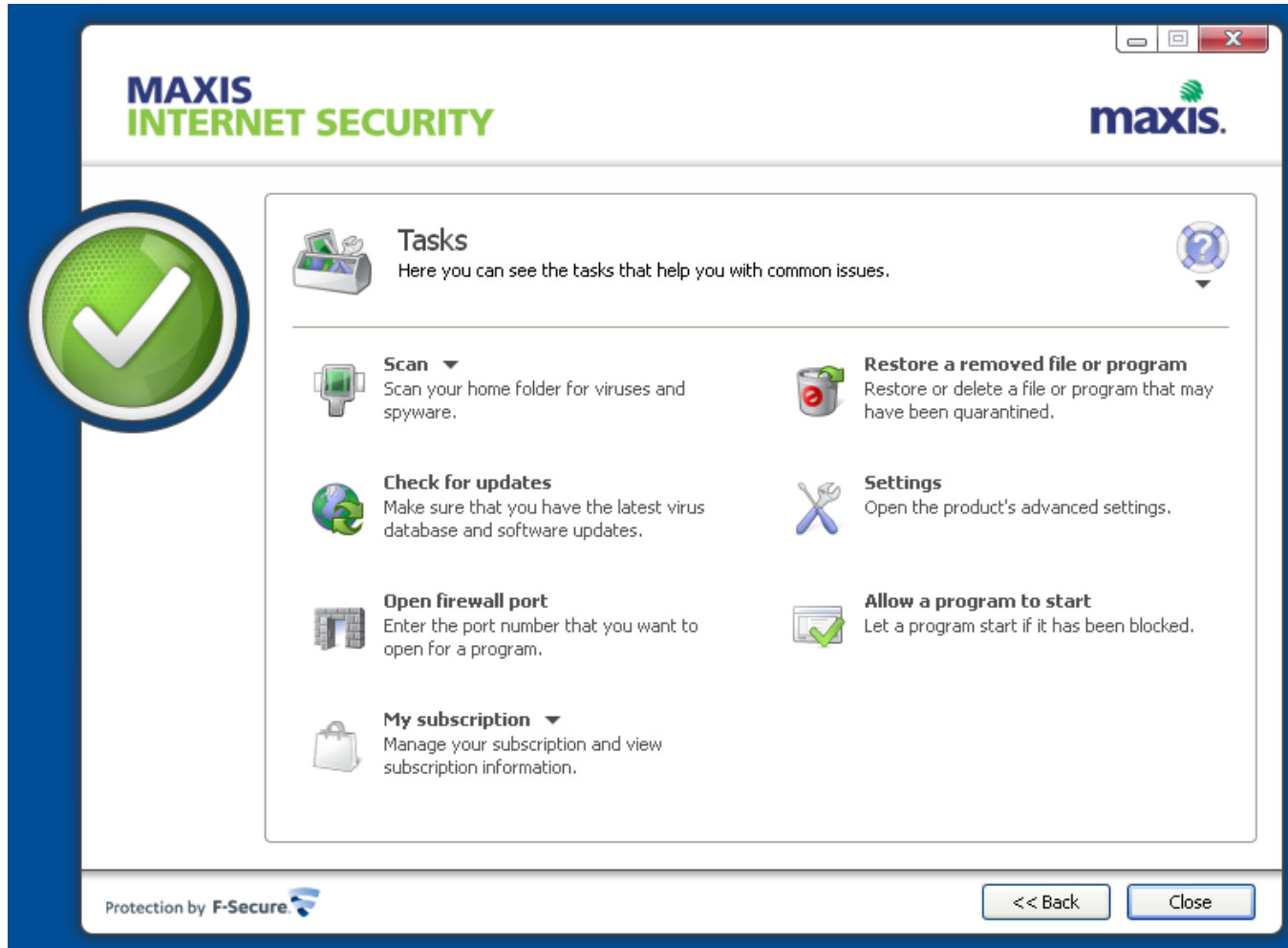
Protection by **F-Secure**

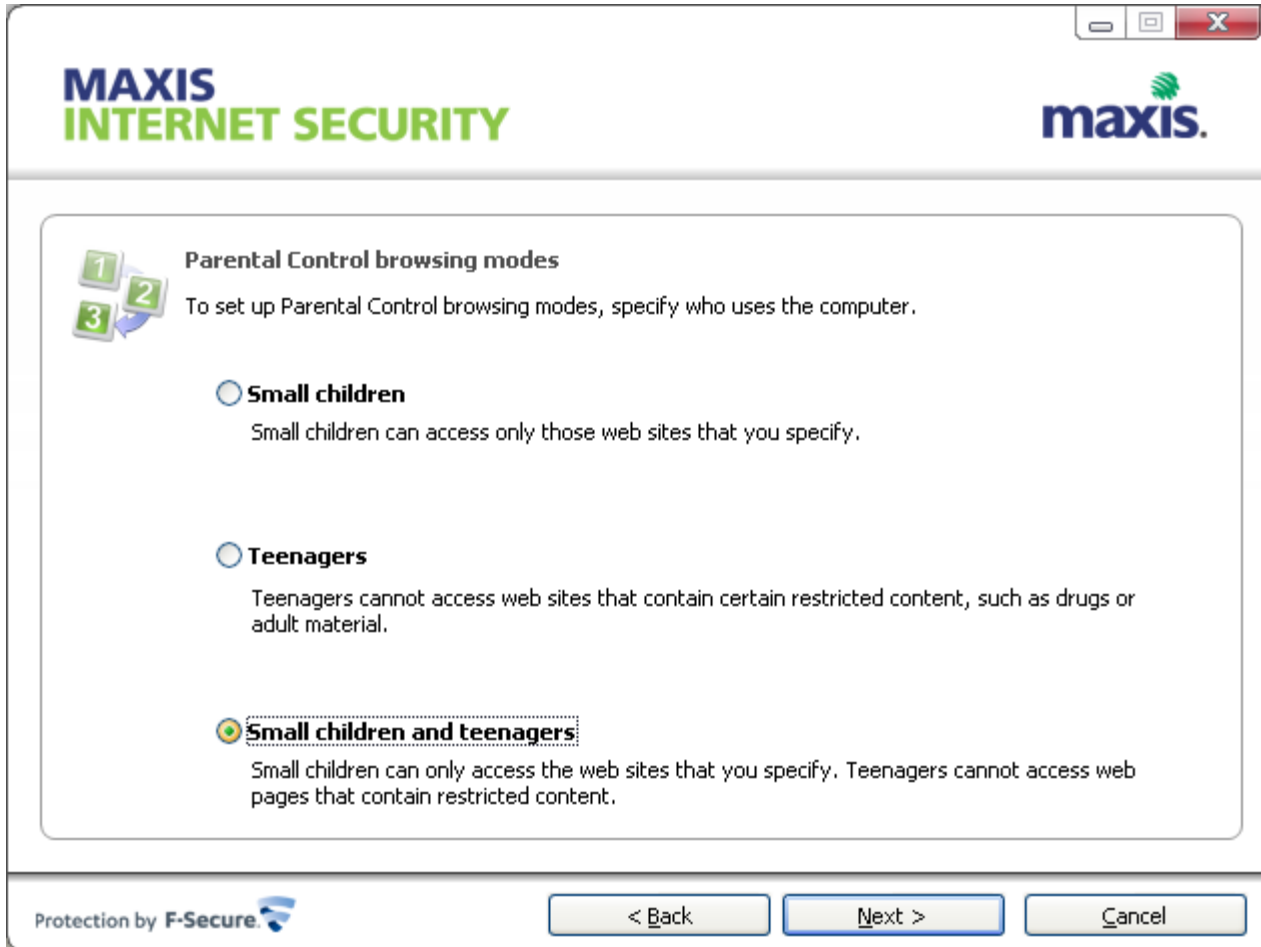
<< Back Close

Installation Guide for Maxis Internet Security

Category	Feature	Status
Computer	<input checked="" type="checkbox"/> Virus and spyware scanning	On
	<input type="checkbox"/> Scheduled scanning	Off
	<input checked="" type="checkbox"/> DeepGuard	On
Network connections	<input checked="" type="checkbox"/> Firewall (Home)	On
	<input checked="" type="checkbox"/> Application control	On
	<input type="checkbox"/> Dial-up control	Off
Internet	<input checked="" type="checkbox"/> Browsing protection	On
	<input checked="" type="checkbox"/> E-mail filtering	On
	<input checked="" type="checkbox"/> Parental Control	On

Installation Guide for Maxis Internet Security





MAXIS
INTERNET SECURITY

maxis.

Parental Control browsing modes

To set up Parental Control browsing modes, specify who uses the computer.

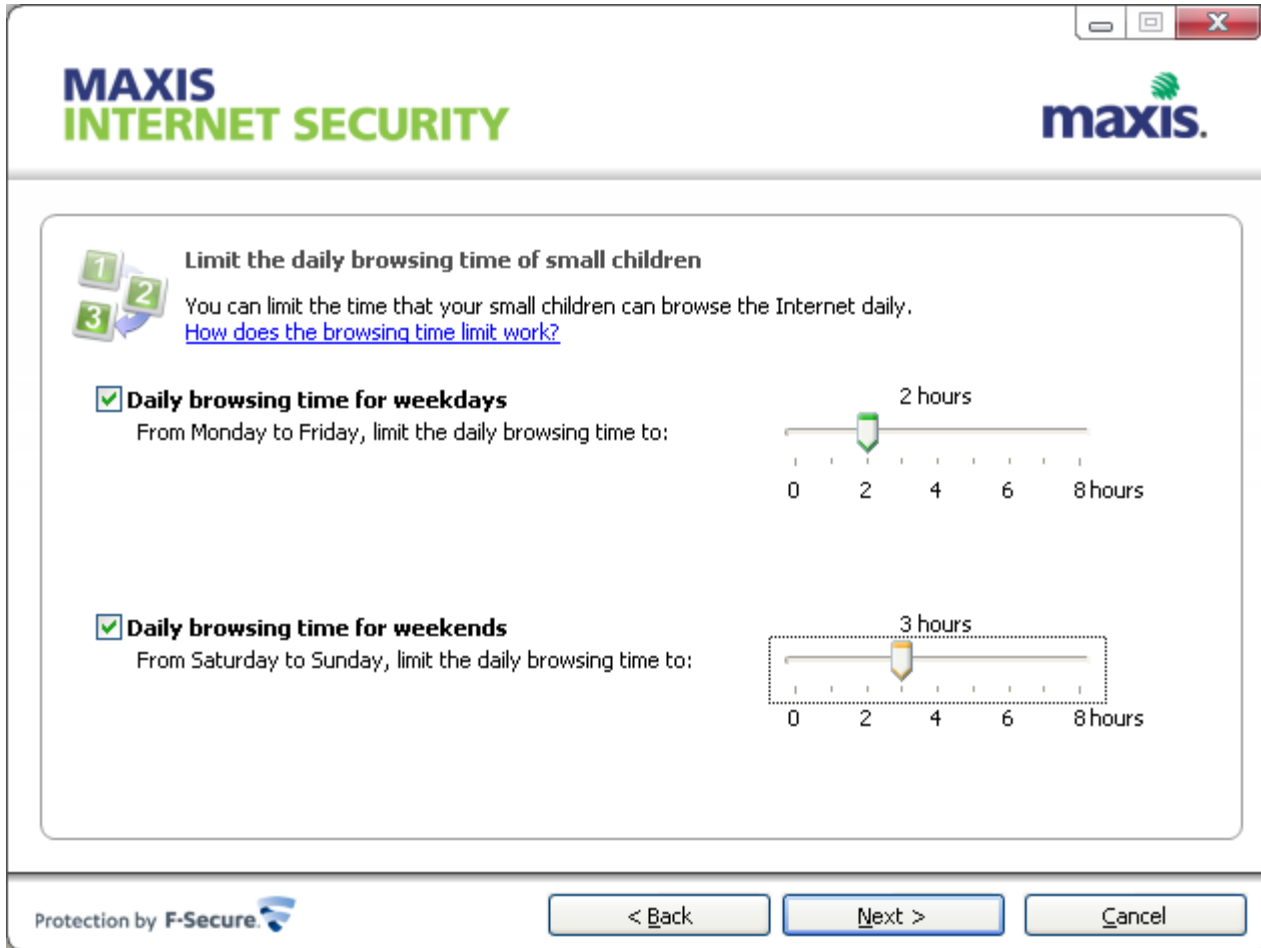
Small children
Small children can access only those web sites that you specify.

Teenagers
Teenagers cannot access web sites that contain certain restricted content, such as drugs or adult material.

Small children and teenagers
Small children can only access the web sites that you specify. Teenagers cannot access web pages that contain restricted content.

Protection by **F-Secure**

< Back Next > Cancel



MAXIS INTERNET SECURITY

Limit the daily browsing time of small children

You can limit the time that your small children can browse the Internet daily.
[How does the browsing time limit work?](#)

Daily browsing time for weekdays
From Monday to Friday, limit the daily browsing time to:

0 2 4 6 8 hours

2 hours

Daily browsing time for weekends
From Saturday to Sunday, limit the daily browsing time to:

0 2 4 6 8 hours

3 hours

Protection by **F-Secure**

< Back Next > Cancel

MAXIS INTERNET SECURITY

maxis.

1 2 3 **Restrict the daily browsing time of small children to specific hours**

You can restrict the hours when your small children can browse the Internet.
[How do the browsing hour restrictions work?](#)

Restrict browsing on weekdays
From Monday to Friday, prevent browsing during these hours (click the boxes below):

00:00	02:00	04:00	06:00	08:00	10:00	12:00	14:00	16:00	18:00	20:00	22:00	00:00
-------	-------	-------	-------	-------	-------	-------	-------	-------	-------	-------	-------	-------

Restrict browsing on weekends
From Saturday to Sunday, prevent browsing during these hours (click the boxes below):

00:00	02:00	04:00	06:00	08:00	10:00	12:00	14:00	16:00	18:00	20:00	22:00	00:00
-------	-------	-------	-------	-------	-------	-------	-------	-------	-------	-------	-------	-------

= Allow
 = Prevent

Protection by **F-Secure**

< Back Next > Cancel

Installation Guide for Maxis Internet Security



Installation Guide for Maxis Internet Security





Create a Parent password

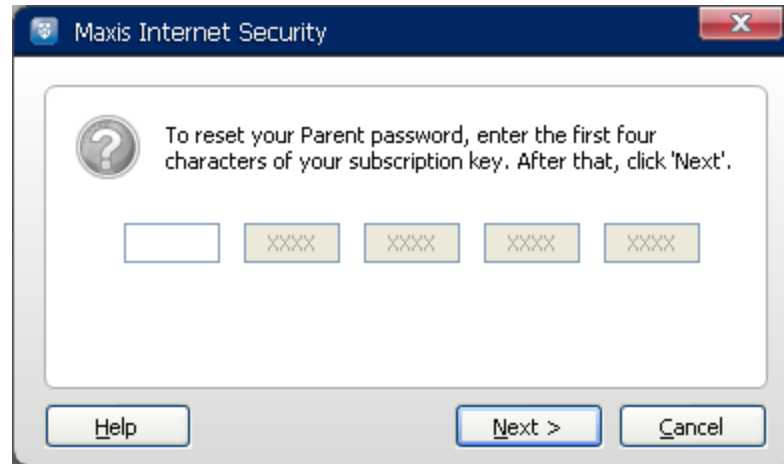
Create a Parent password that you can easily remember. You need the password to change the security settings and access the Internet without restrictions.

Create a Parent password:



Confirm password:


Protection by 

Installation Guide for Maxis Internet Security



Installation Guide for Maxis Internet Security






Create a hint for the Parent password

You can create a password hint that helps you remember your Parent password. You need the password for opening the Internet or our product. Remember that anyone using the computer sees the hint.
[Show an example](#)

Create a hint for the Parent password:

Protection by 

< Back Next > Cancel

Installation Guide for Maxis Internet Security

MAXIS
INTERNET SECURITY

maxis.

1
2
3

Limit the daily browsing time of teenagers

You can limit the time that your teenagers can browse the Internet daily.
[How does the browsing time limit work?](#)

Daily browsing time for weekdays
From Monday to Friday, limit the daily browsing time to:

0 2 4 6 8 hours

Daily browsing time for weekends
From Saturday to Sunday, limit the daily browsing time to:

0 2 4 6 8 hours

Protection by **F-Secure**

< Back Next > Cancel

Installation Guide for Maxis Internet Security

MAXIS INTERNET SECURITY

maxis.

Create a Teenager password

1 2 3

Create a Teenager password and give it to the teenagers who use this computer. This password allows teenagers to bypass the restrictions of the Small Child browsing mode. Create a password that you can easily remember.

Create a Teenager password:

Confirm password:

Protection by **F-Secure**

< Back Next > Cancel

MAXIS INTERNET SECURITY

maxis.

1
2
3

Restrict the daily browsing time of teenagers to specific hours

You can restrict the hours when your teenagers can browse the Internet.
[How do the browsing hour restrictions work?](#)

Restrict browsing on weekdays

From Monday to Friday, prevent browsing during these hours (click the boxes below):

00:00 02:00 04:00 06:00 08:00 10:00 12:00 14:00 16:00 18:00 20:00 22:00 00:00

Restrict browsing on weekends

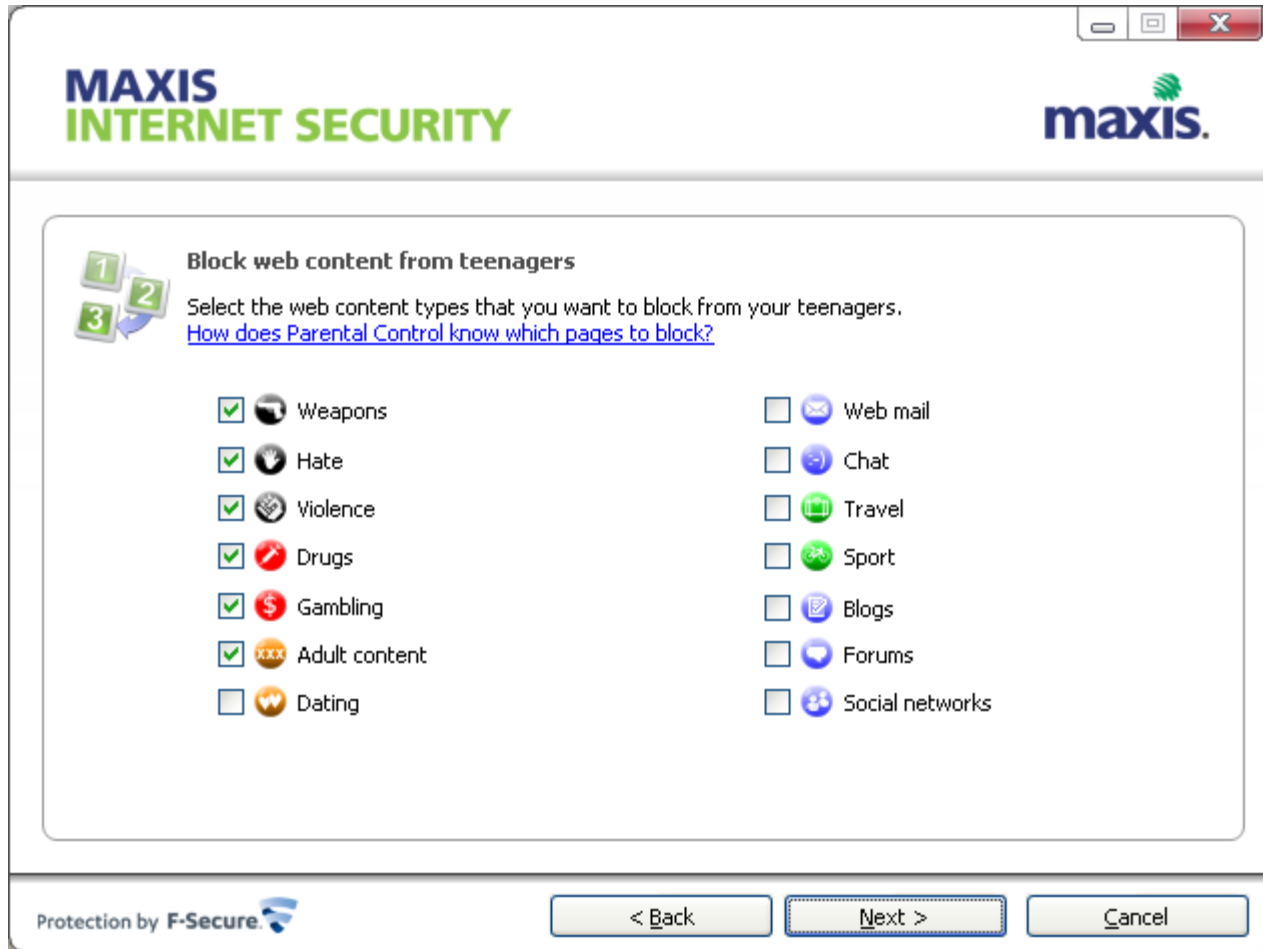
From Saturday to Sunday, prevent browsing during these hours (click the boxes below):

00:00 02:00 04:00 06:00 08:00 10:00 12:00 14:00 16:00 18:00 20:00 22:00 00:00

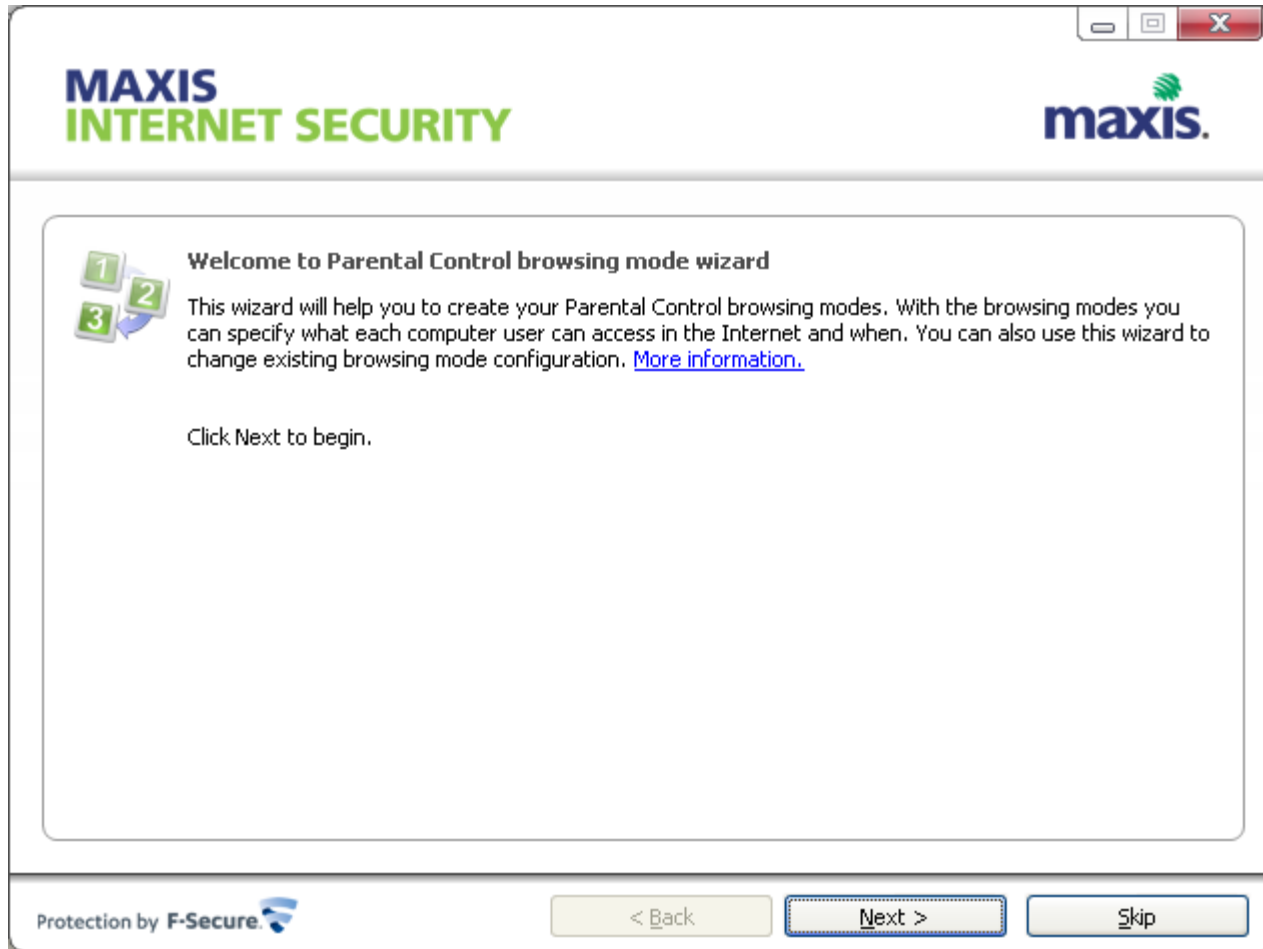
= Allow
 = Prevent

Protection by **F-Secure**

< Back Next > Cancel



Installation Guide for Maxis Internet Security



Installation Guide for Maxis Internet Security

