

Document Outline:

This document shall allow end users to install the E220 on a MAC Leopard (10.5.1) release.

Note:

- There is no official software release for MAC Leopard from Huawei
- This document shall allow the customer to configure the settings manually on the MAC Leopard using the existing Huawei E220 driver
- Maxis will not guarantee that the manual configuration will work at all times

Workaround:

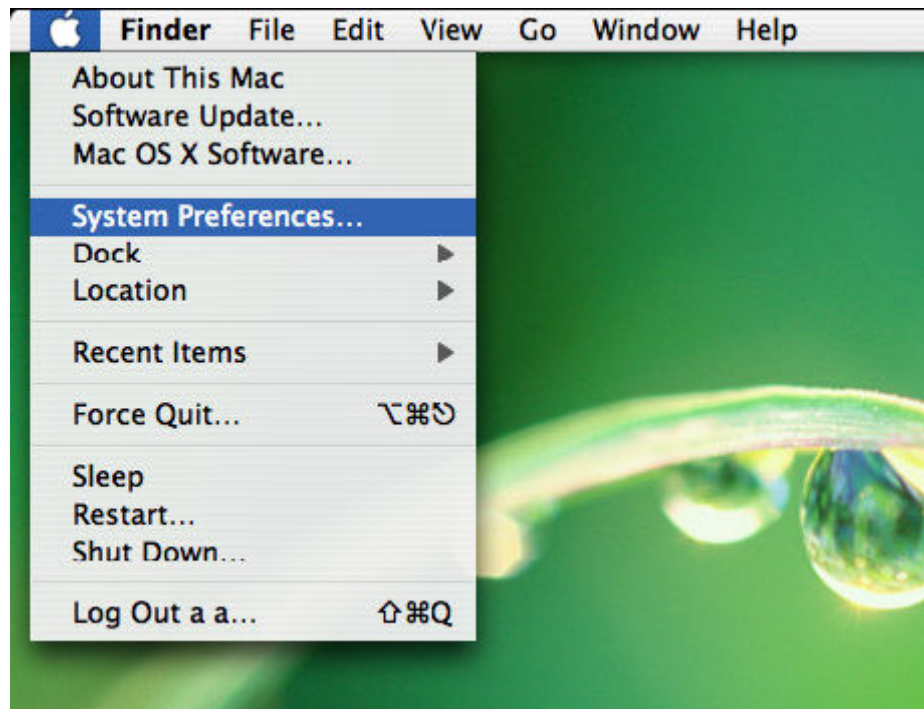
Step 1 Install the latest MAC driver (software version MACHOST-V100R001B022D04SP00C03). Follow the installation procedures detailed out in the MAC user guide.

Step 2 Please ensure that the SIM card is not locked with a PIN.

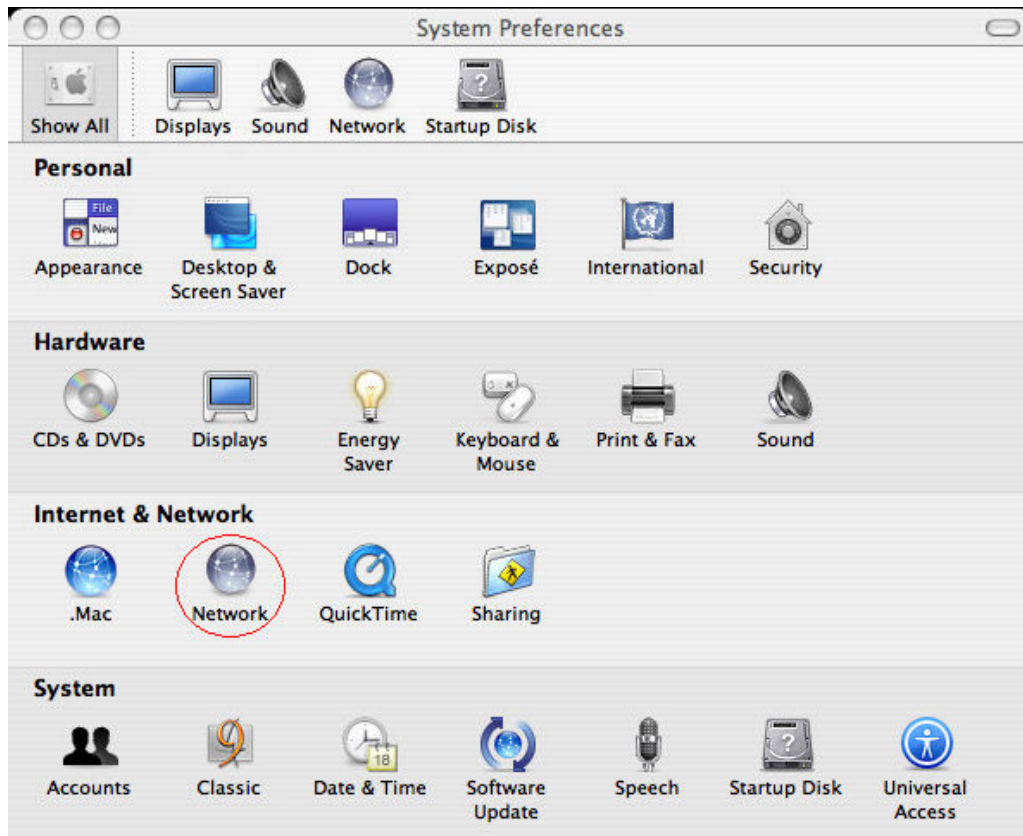
- The MAC computer cannot detect a SIM card which has a PIN code enabled, thus connection to the internet will fail prematurely.
- To unlock the PIN, please use another device e.g. hand phone and select the option to disable the PIN code.

Step 3 Connect the USB modem to a MAC computer

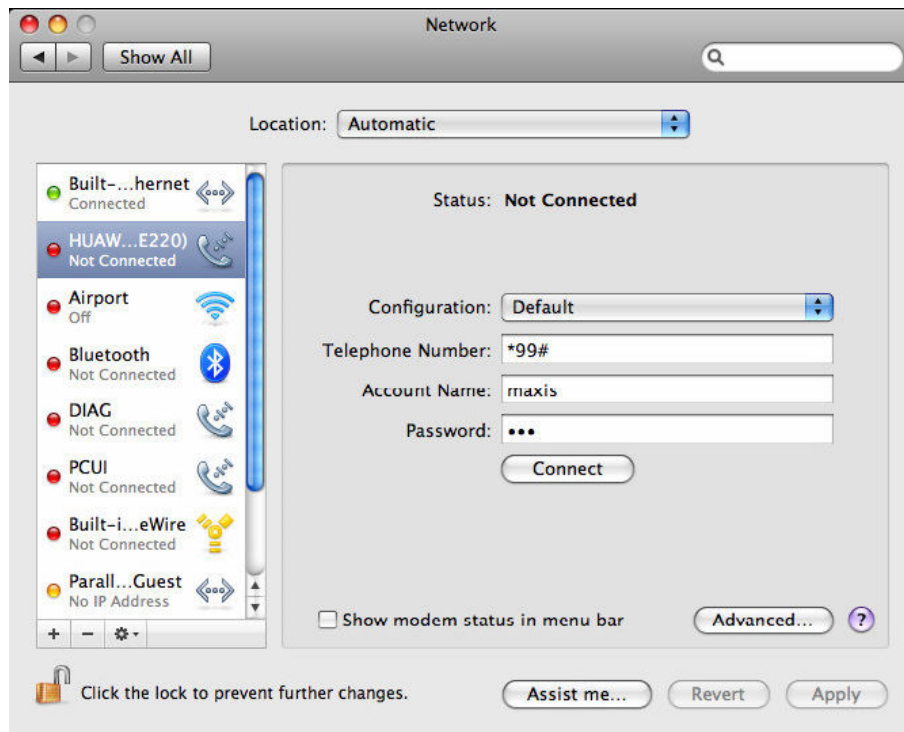
Step 4 Open System Preference



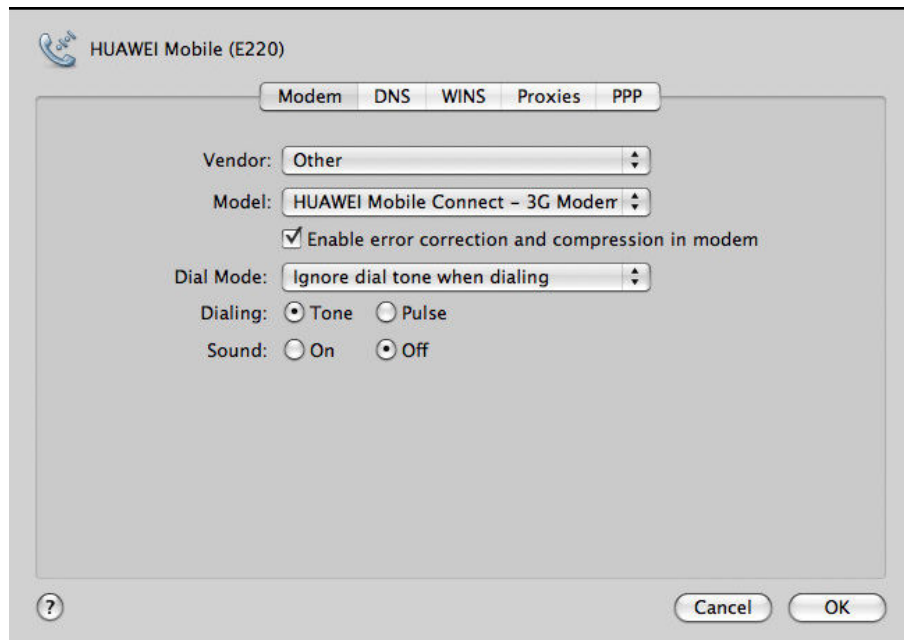
Step 5 Click Network in System Preference



- Step 6** Input PPP parameters
Please follow Figure below:
Please select the “Huawei E220 modem” on the left panel.



Telephone number: *99#
Account name: maxis
Password: wap
Click on “Advanced”.
The following dialog box will appear:



Input Modem Parameters

Modem: Select “HUAWEI Mobile Connect – 3G Modem” in the popup box

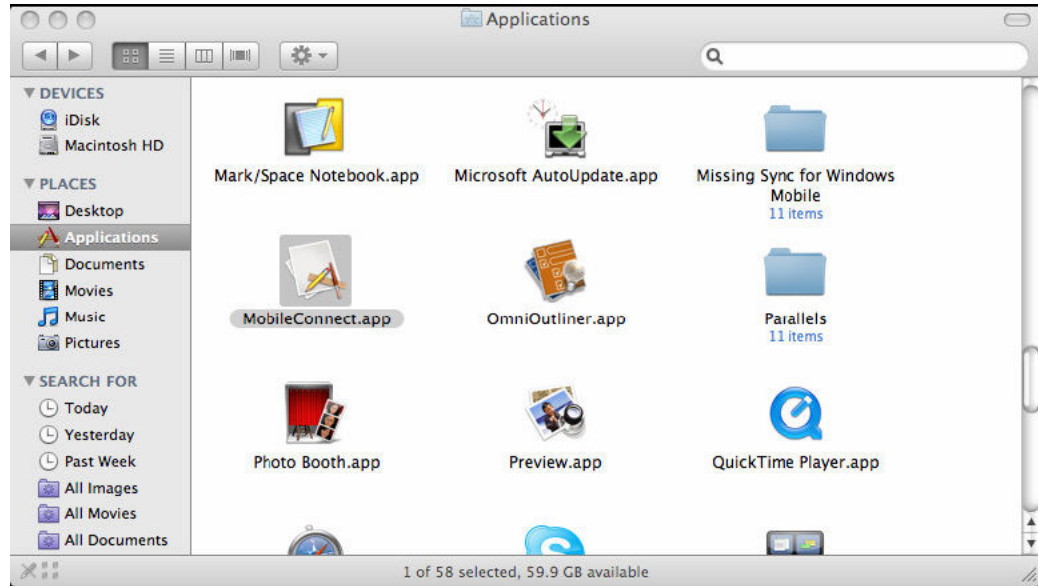
Disable the item “Ignore dial tone when dialing”

Dialing: Select the Tone item

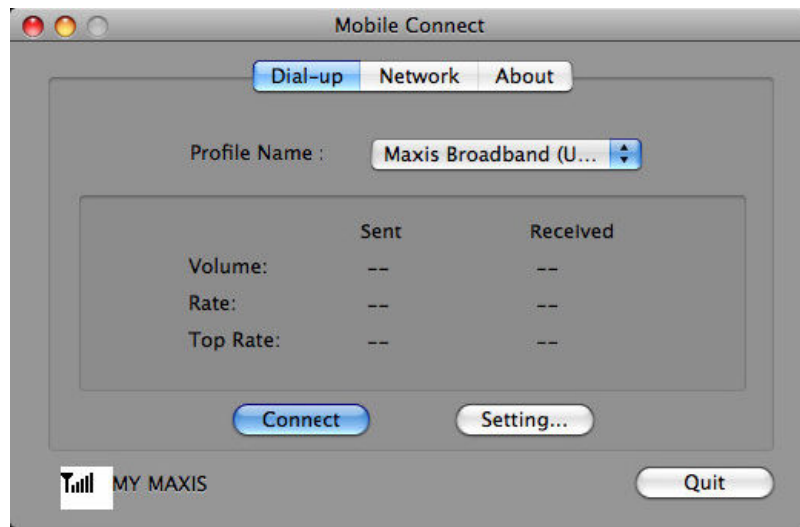
Sound: Select the Off item

Step 7 Click “OK” to go back to the main window and then “APPLY” to apply the settings.

Step 8 Go to Applications folder and click on Mobile Connect.

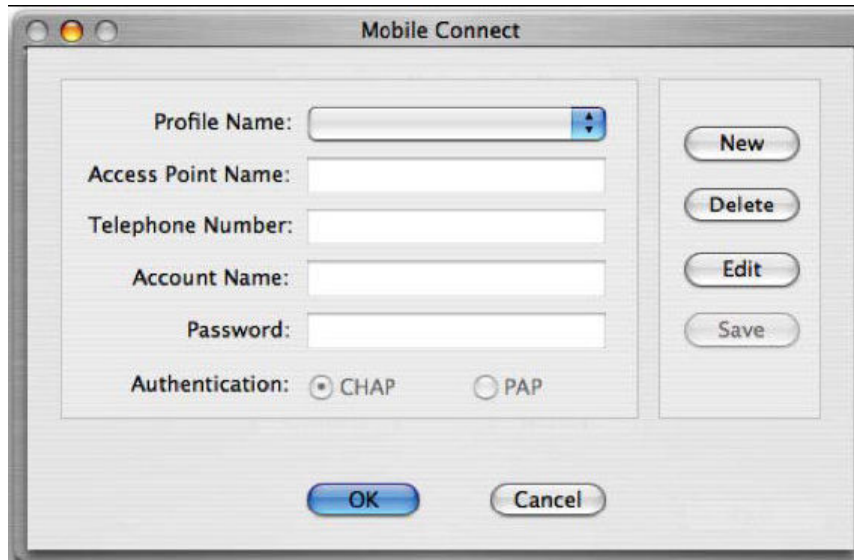


Step 9 The following window will appear.



If the profile has not been created, please click on “Setting”

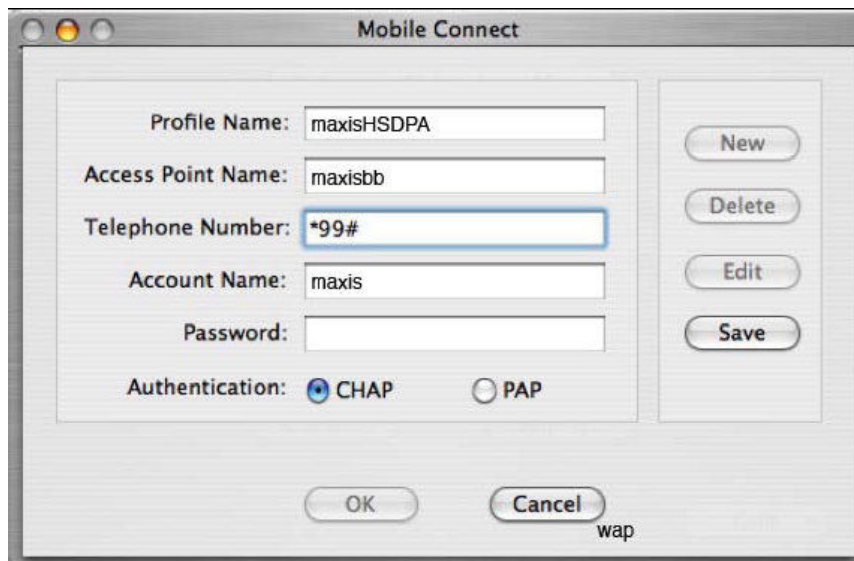
The following window will appear.
Click on “New” to create a new Profile:



The screenshot shows the 'Mobile Connect' dialog box with the following fields and controls:

- Profile Name: [Dropdown menu]
- Access Point Name: [Text field]
- Telephone Number: [Text field]
- Account Name: [Text field]
- Password: [Text field]
- Authentication: CHAP PAP
- Buttons: New, Delete, Edit, Save, OK, Cancel

Input the network parameters as follows:

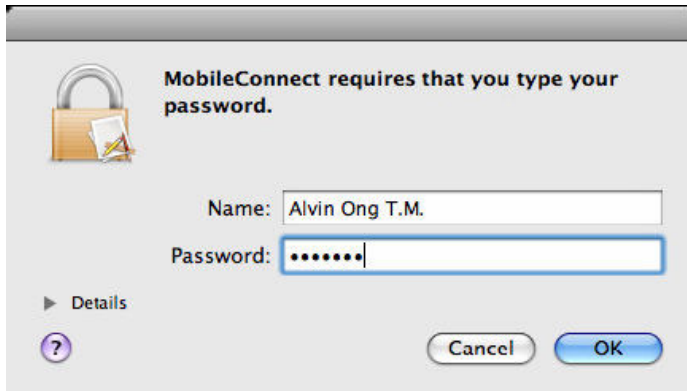


The screenshot shows the 'Mobile Connect' dialog box with the following parameters filled in:

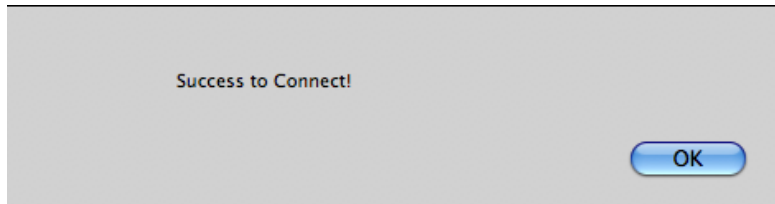
- Profile Name: maxisHSDPA
- Access Point Name: maxisbb
- Telephone Number: *99#
- Account Name: maxis
- Password: [Empty]
- Authentication: CHAP PAP
- Buttons: New, Delete, Edit, Save, OK, Cancel

Click “Save” to save your settings and “OK” to go back to the main window.

Click on Connect.
The following dialog box will appear requesting for MAC username and password.
Please fill in your MAC username and password.



Step 10 Once connected the following dialog box will appear:



Step 11 The connection statistics will appear:

