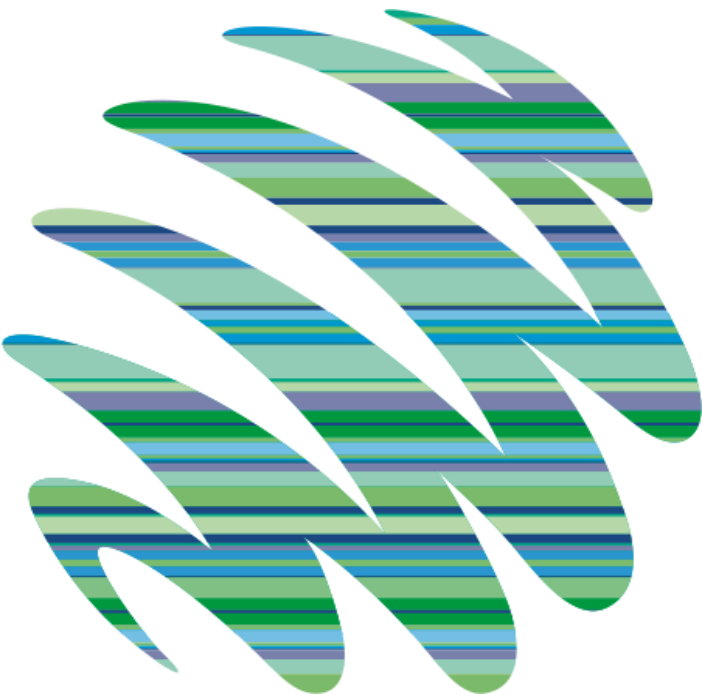
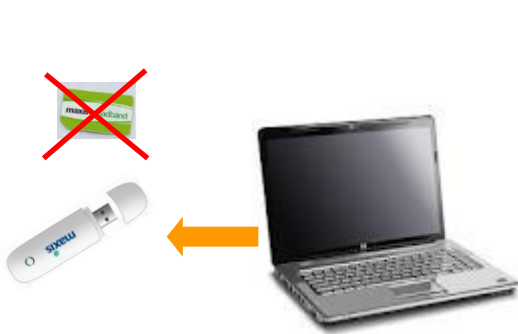


Step by step guide on:

- Modem Firmware Update
- Connection Manager Upgrade
- Maxis Broadband Wizard Installation



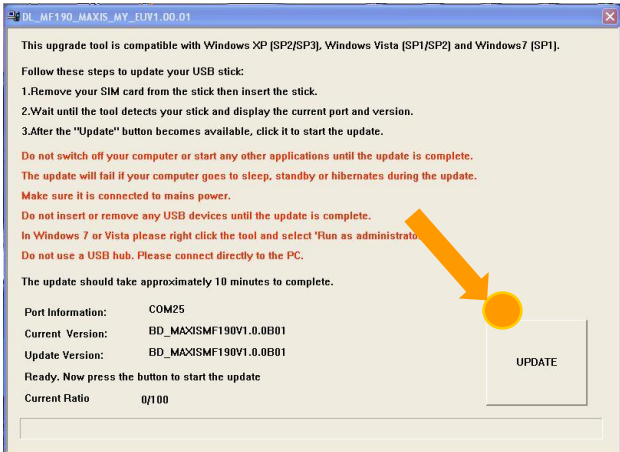


! Please ensure you take out the SIM card from the modem. Plug in your modem.

1

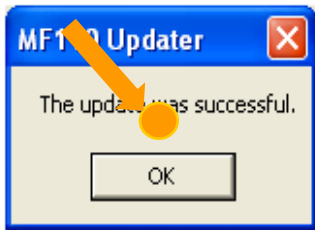
Start by double click on the downloaded file

2



Follow the instruction. Click on UPDATE button

3





You must first close any open Connection Manager

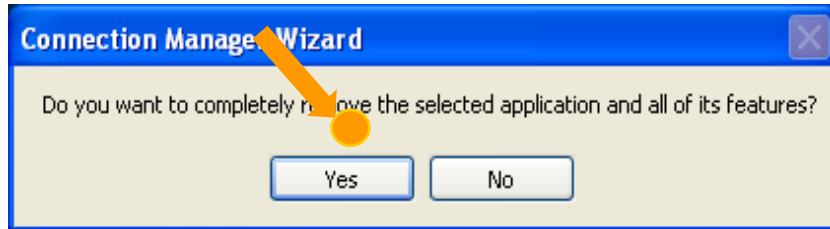


Then remove/unplug your modem

1

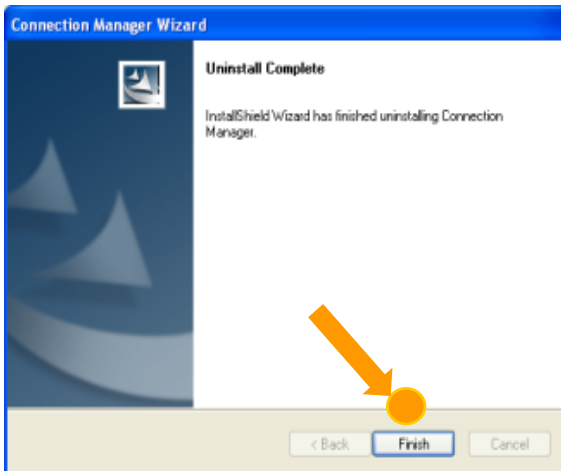
Uninstall the older version of connection manager. Go to "Start > All Programs > Maxis Broadband > Uninstall. Wait till uninstall is completed.

2



If you have not remove/unplug your modem, please do so. Then click on 'Yes' button

3

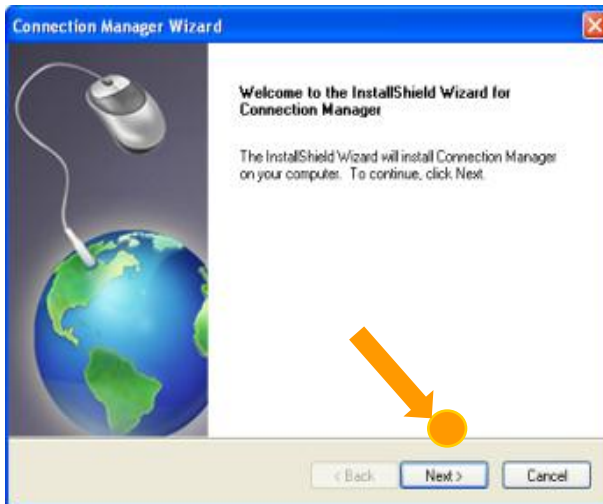


Uninstall successfully completed



Plug in your modem.

4

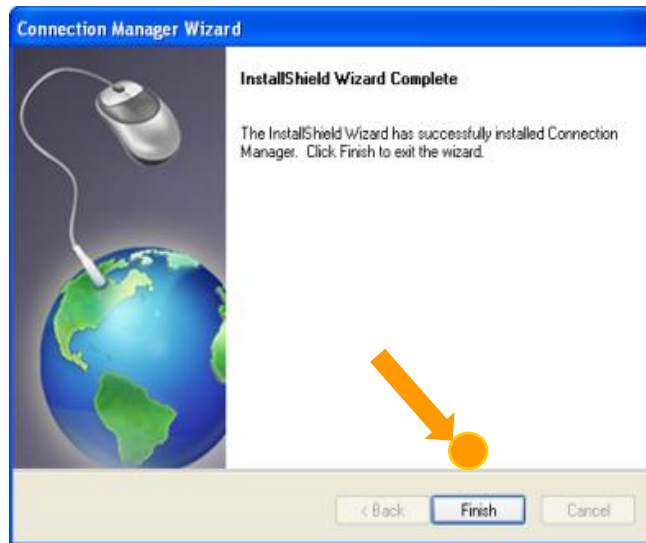
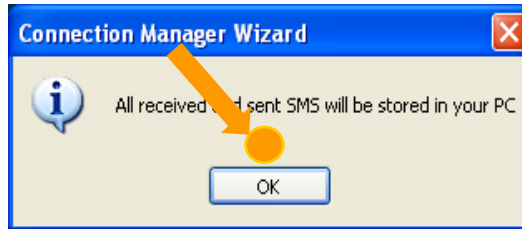


The installation wizard will pop-up* as below to install the new Connection manager into device.

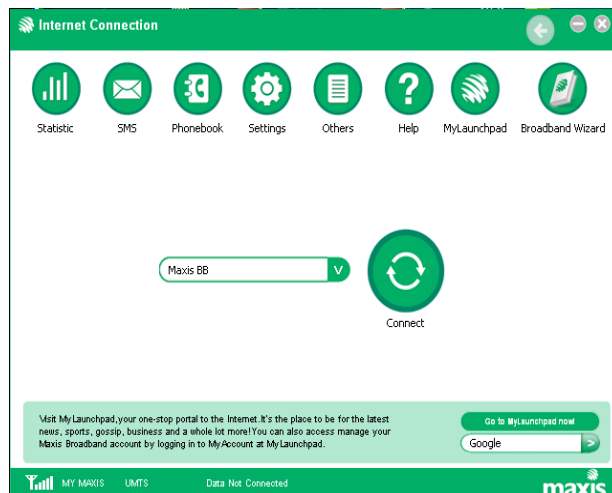
Note: * If the AutoRun pop up is blocked on your PC/laptop, please open the downloaded zip file and click on the .exe file to start the installation

5

Once the new software installation completed, below screen will pop-up



New Connection Manager with Broadband Wizard Icon

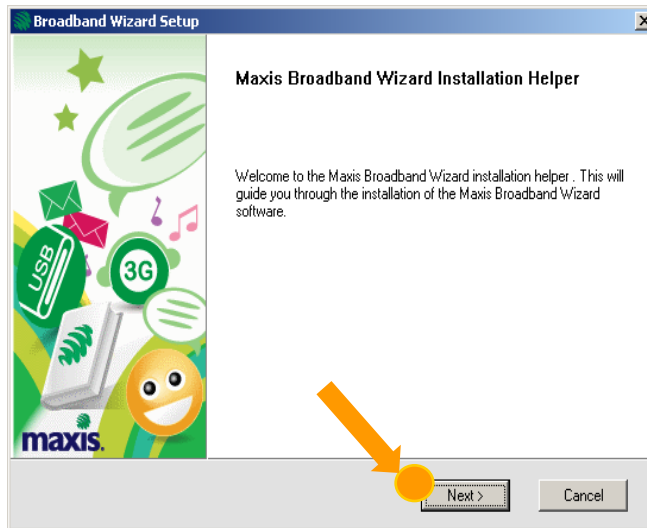




You must first install the modem software (Connection manager)

1

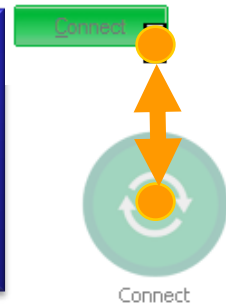
Maxis Broadband Wizard installation will automatically start. Click on Next to proceed.



2

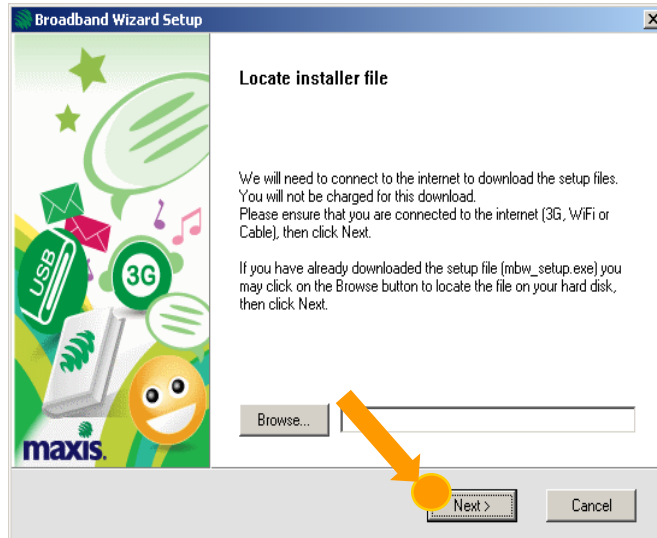


Please ensure to Connect to Internet. Click on Connect button on your Connection Manager



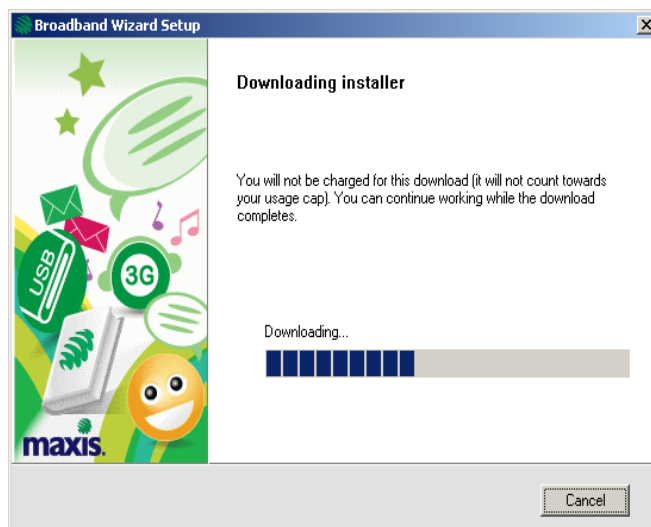
3

Click on Next to proceed.



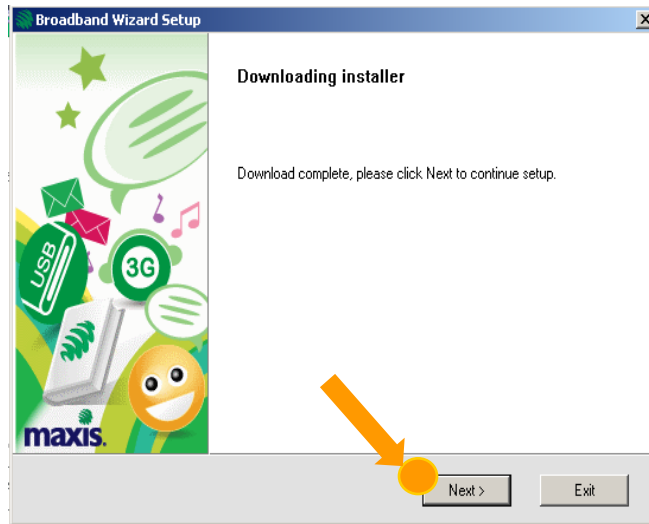
4

Installer downloading is in progress



5

Installer download is completed. Please click on Next button to proceed with the installation.



6

! You may be asked to install additional components such as Microsoft .net and Adobe Flash. Please follow the program instructions to install.

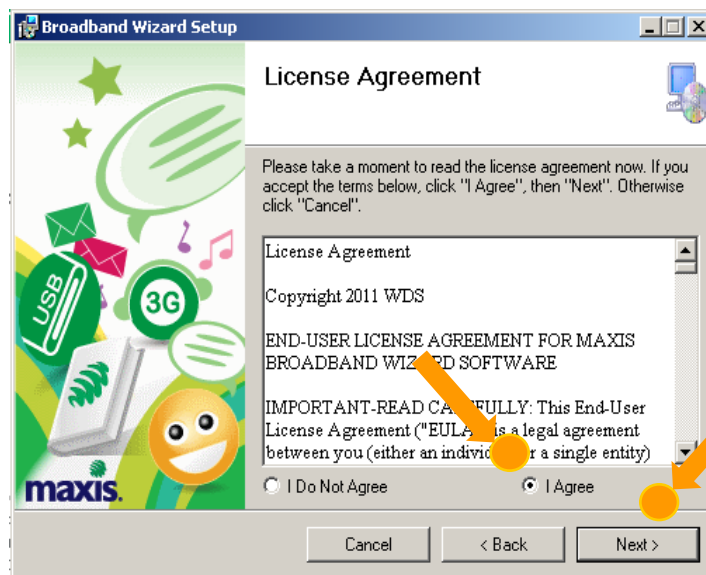
7

Please click on Next button to proceed with the installation Wizard.



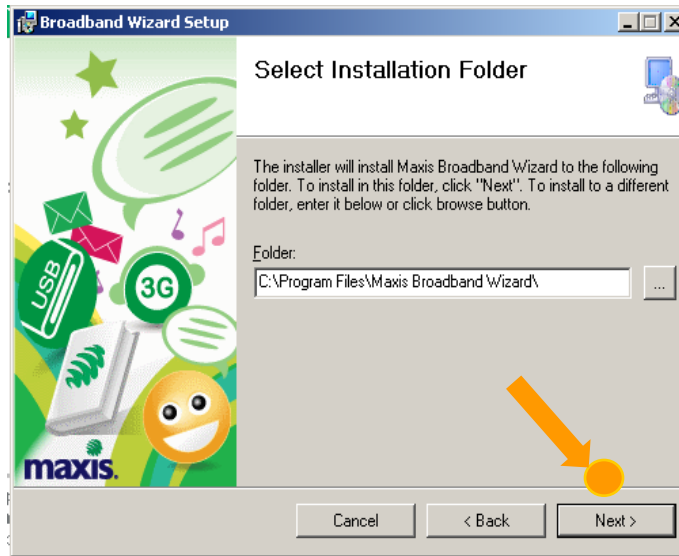
8

Please read the Agreement and click on I Agree button. Click on Next button



9

Please click on Next button to continue



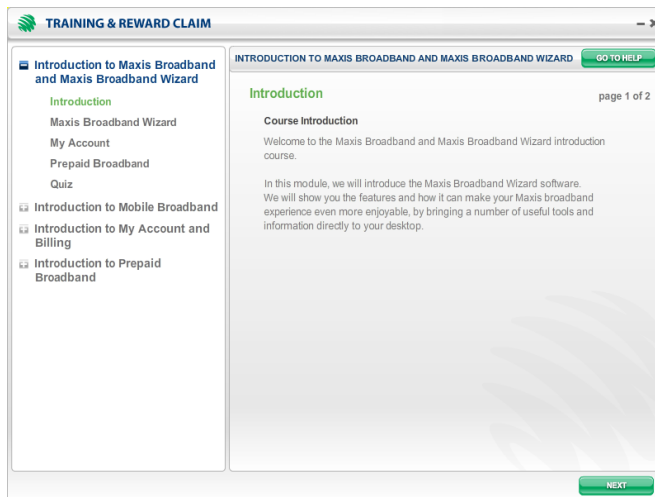
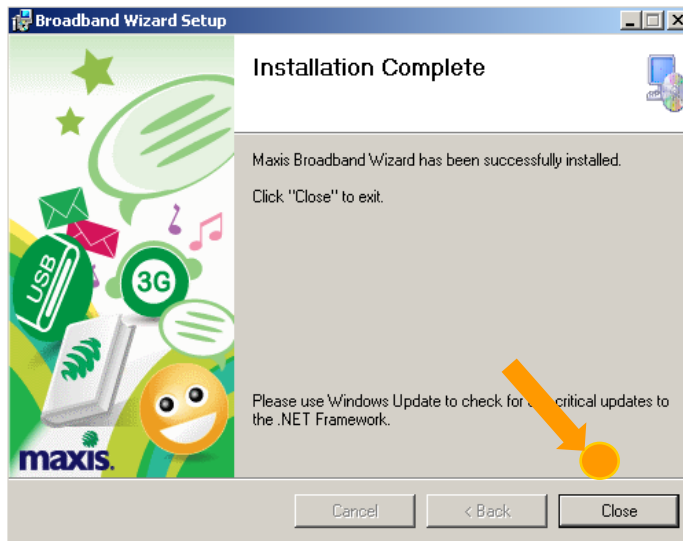
10

Installation is in progress



11

Installation completed, click on Close button.



Click the button in the connection manager to open



Broadband Wizard