

ZyXel P791Rv2 configuration

OLD SETTINGS	NEW SETTINGS
PPPoA	PPPoE

STEP 1

Open a Web browser and type in **https://192.168.1.1**
Press enter

STEP 2

Enter the modem Password

STEP 3

Click on Advanced Setup

STEP 4

Key in these **LAN settings**:

- TCP/IP
- IP address = Gateway IP address (check with ISP provider)
- IP Subnet Mask = 255.255.255.248 (check with ISP provider)

Then click Apply

The screenshot shows the ZyXEL web interface for LAN configuration. The left sidebar contains a navigation menu with 'Advanced Setup' selected, and 'LAN' highlighted. The main content area is titled 'LAN - LAN Setup' and is divided into two sections: 'DHCP' and 'TCP/IP'. The 'DHCP' section includes fields for 'Server' (dropdown), 'Client IP Pool Starting Address' (192.168.1.33), 'Size of Client IP Pool' (32), 'Primary DNS Server' (0.0.0.0), 'Secondary DNS Server' (0.0.0.0), and 'Remote DHCP Server' (N/A). The 'TCP/IP' section includes fields for 'IP Address' (202.146.83.129), 'IP Subnet Mask' (255.255.255.224), 'RIP Direction' (Both), 'RIP Version' (RIP-2B), and 'Multicast' (None). At the bottom, there are 'Apply' and 'Cancel' buttons.

STEP 5

Key in these **WAN settings**:

- Login Information:
 - Service Name : Blank.
 - User Name : 12345 (sample: Provide by ISP provider)
 - Password : 123451 (sample: Provide by ISP provider)

Then click Apply

ZyXEL
TOTAL INTERNET ACCESS SOLUTION

SITE MAP HELP

WAN - WAN Setup

Name

Mode

Encapsulation

Multiplex

Virtual Circuit ID

VPI

VCI

ATM QoS Type

Cell Rate

Peak Cell Rate cell/sec

Sustain Cell Rate cell/sec

Maximum Burst Size

Login Information

Service Name

User Name

Password

IP Address

Obtain an IP Address Automatically

Static IP Address

IP Address

Connection

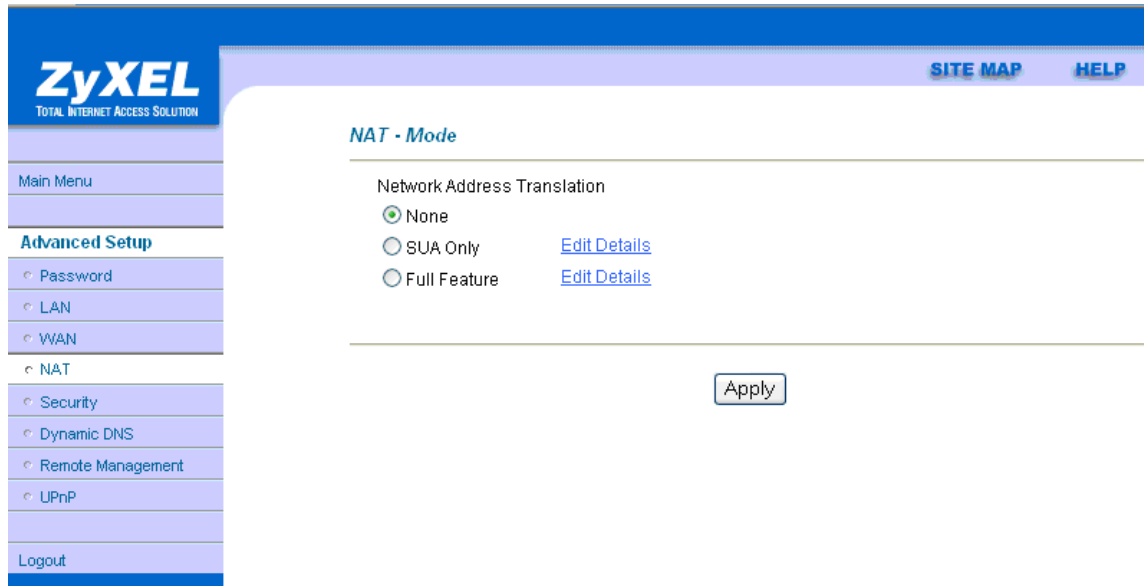
Nailed-Up Connection

Connect on Demand

Max Idle Timeout Secs

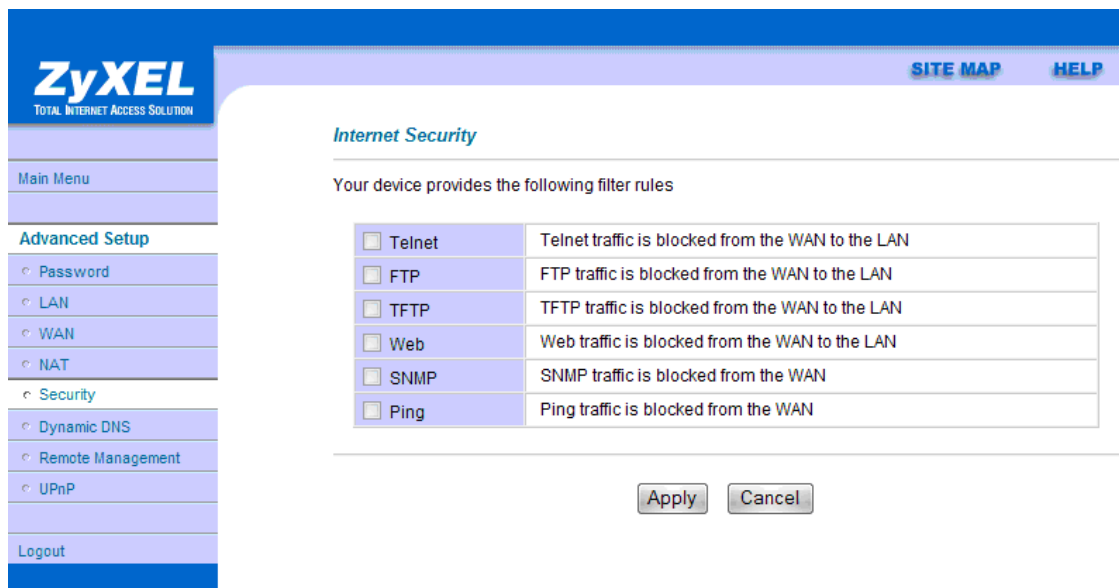
STEP 6

Set the **NAT** setting to **None**
Then click Apply



STEP 7

Select and enable all boxes on **Internet Security**
Then click on Apply



STEP 8

Set Access Status to **ALL** on Remote Management Control
Then click Apply

The screenshot shows the ZyXEL web interface for Remote Management Control. On the left is a navigation menu with options like Main Menu, Advanced Setup, Password, LAN, WAN, NAT, Security, Dynamic DNS, Remote Management, UPnP, and Logout. The main content area is titled 'Remote Management Control' and contains a table with the following data:

Server Type	Access Status	Port	Secured Client IP
Telnet	All	23	0.0.0.0
FTP	All	21	0.0.0.0
Web	All	80	0.0.0.0

Below the table are two buttons: 'Apply' and 'Cancel'.

Your configuration is **done**
Thank you and enjoy the new services