

Aztech Modem 97 configuration

OLD SETTINGS	NEW SETTINGS
PPPoA	PPPoE

STEP 1

Plug in your modem cable

STEP 2

Wait for the **DSL LED** light to be stable

STEP 3

Plug the **LAN** cable into the computer

STEP 4

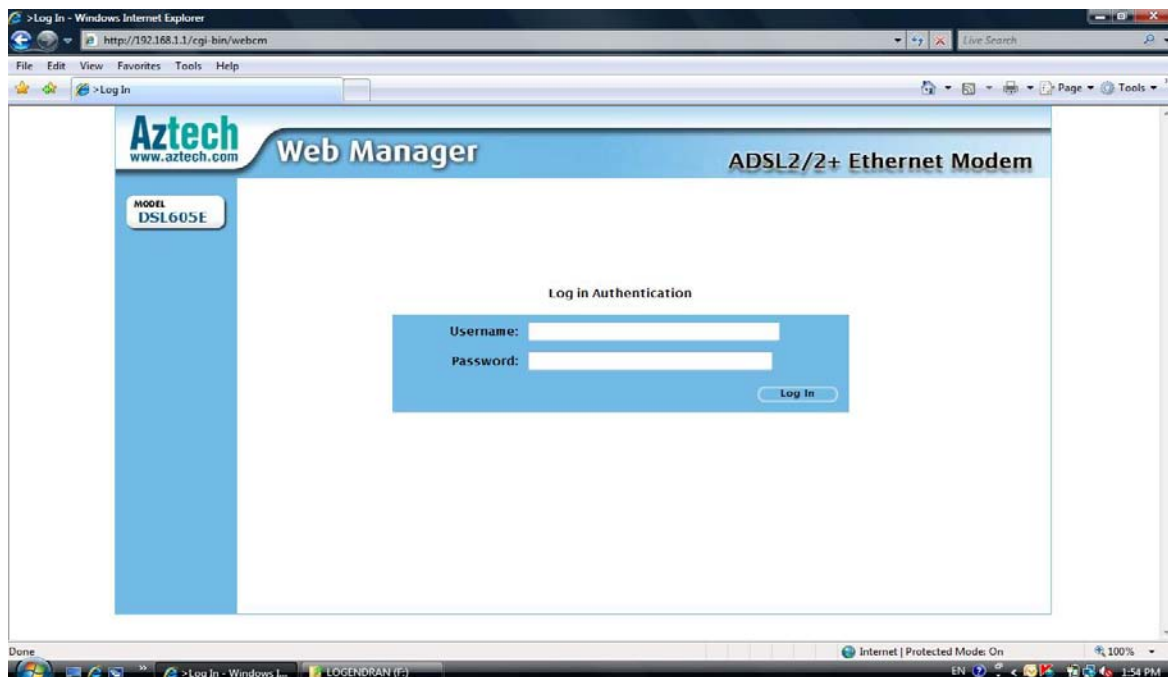
Wait for the **ETHERNET LED** light to come on

STEP 5

Open your Web browser (e.g. Internet Explorer)

STEP 6

Type the modem IP (**192.168.1.1**)

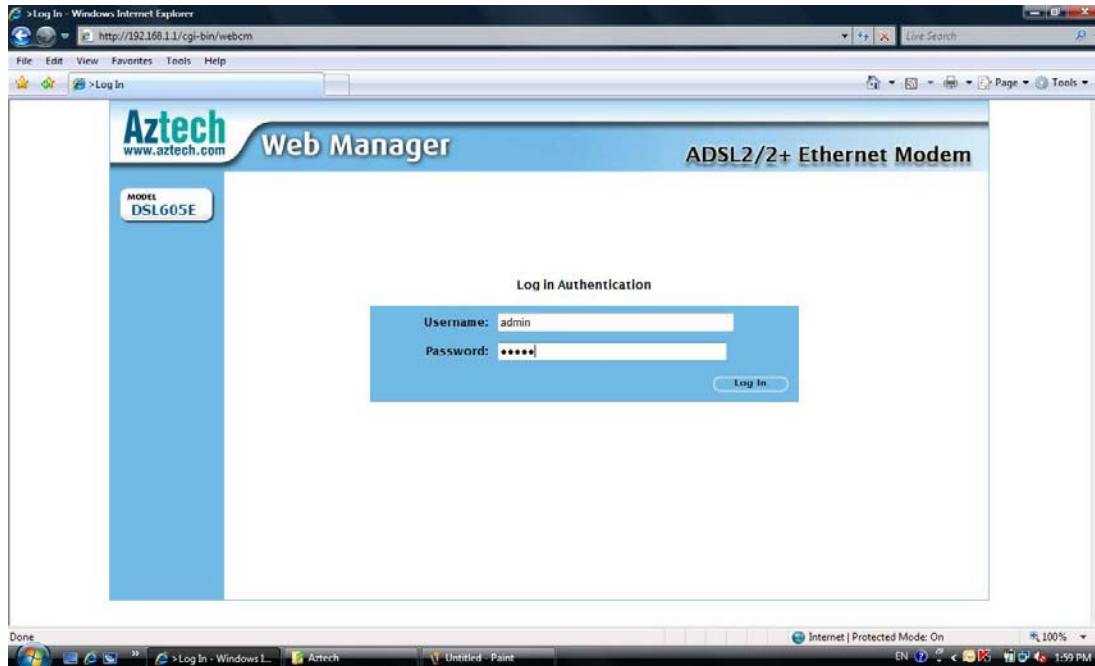


STEP 7

Login with the username: **admin**

Type in the Password: **admin**

Click on LOG IN



STEP 8

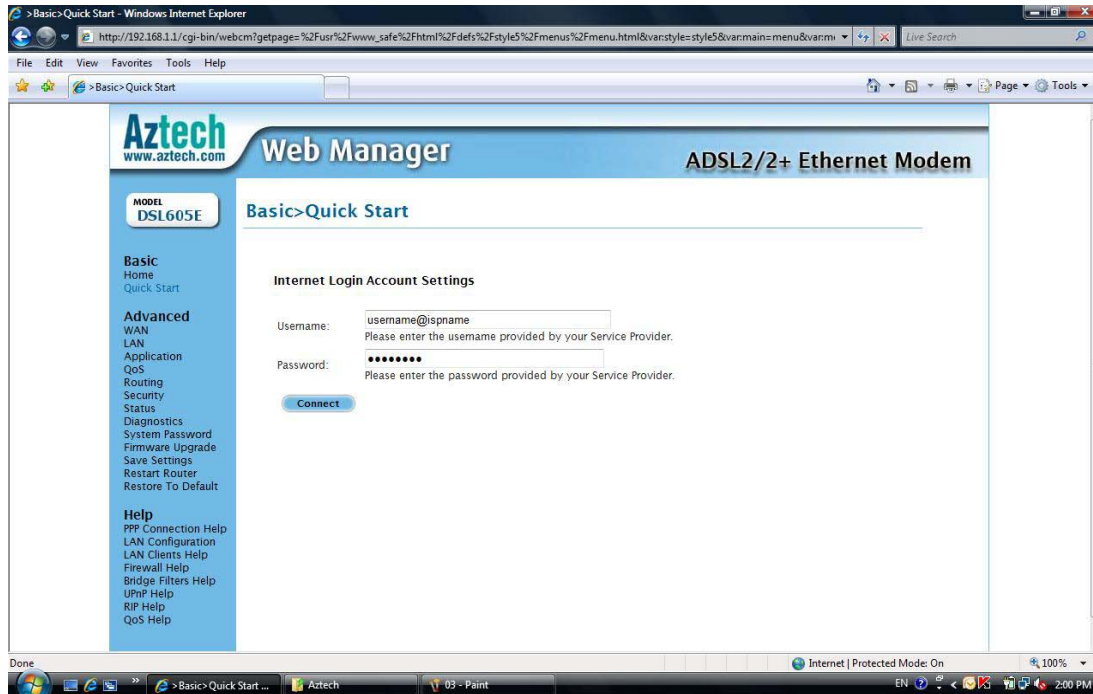
Click on the **QUICK START** (top left)



* Connection type: **Bridge** (single user) or **Router** (multi user).

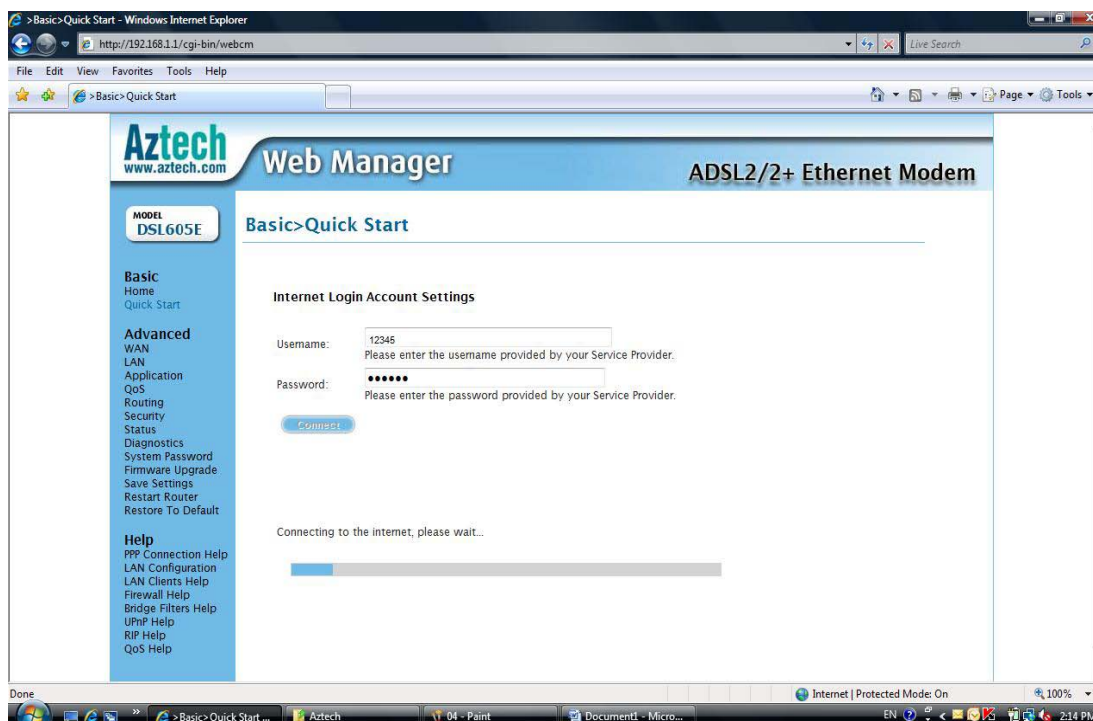
STEP 9

Key in your Maxis modem ID and Password
Click **CONNECT**



STEP 10

Wait while it connects to the Internet



STEP 11

Your configuration is **done**

Thank you and enjoy the new services

The screenshot displays the Aztech Web Manager interface for an ADSL2/2+ Ethernet Modem. The browser address bar shows the URL: `http://192.168.1.1/cgi-bin/webcm?getpages/ust/www_safe/html/dets/style3/menus/menu.html&varstyle3style&varmainmenu&varpagename&basic&varen`. The page title is "Web Manager" and the subtitle is "ADSL2/2+ Ethernet Modem". The current page is "Basic > Home".

The interface includes a navigation menu on the left with sections: Basic (Home, Quick Start), Advanced (WAN, LAN, Application, QoS, Routing, Security, Status, Diagnostics, System Password, Firmware Upgrade, Save Settings, Restart Router, Restore To Default), and Help (PPP Connection Help, LAN Configuration, LAN Clients Help, Firewall Help, Bridge Filters Help, UPnP Help, RIP Help, QoS Help).

The main content area is divided into three sections:

- Connection Information:**

DSL	UP
Downstream / Upstream (Kbps)	2048/512
Internet	Connected
Connected Time	0hr 0min 20sec
Connection Type	PPPoE
Username	-1546
IP Address	202.151.200.115
Default Gateway	202.179.110.225
Primary DNS	58.71.132.10
Secondary DNS	58.71.136.10
- Router Information:**

System Uptime	0 hours 18 minutes
Model	DSL605E
Firmware Version	1.21.106m.1
Build	014
Ethernet MAC address	00:30:0A:F1:E9:2C
DSL MAC address	00:30:0A:F1:E9:2D
NAT	Enabled
firewall	Enabled
- Local Network Information:**

LAN IP Address	192.168.1.1
DHCP	Enabled
DHCP Range	192.168.1.2 - 192.168.1.254
Ethernet	Connected

A "Disconnect" button is located below the Connection Information table.